

RPB062Hu01 10µg

Recombinant Heat Shock 70kDa Protein 1 Like Protein (HSPA1L)

Organism Species: *Homo sapiens (Human)*

Instruction manual

FOR RESEARCH USE ONLY

NOT FOR USE IN CLINICAL DIAGNOSTIC PROCEDURES

13th Edition (Revised in Aug, 2023)

[PROPERTIES]

Source: Prokaryotic expression

Host: *E.coli*

Residues: Met1~Asp641

Tags: N-terminal His Tag

Subcellular Location: Secreted

Purity: > 95%

Traits: Freeze-dried powder

Buffer formulation: PBS, pH7.4, containing 0.01% SKL, 5% Trehalose .

Original Concentration: 200µg/mL

Applications: Positive Control; Immunogen; SDS-PAGE; WB.

(May be suitable for use in other assays to be determined by the end user.)

Predicted isoelectric point: 6.0

Predicted Molecular Mass: 71.6kDa

Accurate Molecular Mass: 72kDa as determined by SDS-PAGE reducing conditions.

[USAGE]

Reconstitute in PBS (pH7.4) to a concentration of 0.1-1.0 mg/mL. Do not vortex.

[STORAGE AND STABILITY]

Storage: Avoid repeated freeze/thaw cycles.

Store at 2-8°C for one month.

Aliquot and store at -80°C for 12 months.

Stability Test: The thermal stability is described by the loss rate. The loss rate was determined by accelerated thermal degradation test, that is, incubate the protein at 37°C for 48h, and no obvious degradation and precipitation were observed. The loss rate is less than 5% within the expiration date under appropriate storage condition.

[SEQUENCE]

```

MATAKGIAIG IDLGTTYSCV GVFQHGKVEI IANDQGNRTT PSYVAFTDTE
RLIGDAAKNQ VAMNPQNTVF DAKRLIGRKF NDPVVQADMK LWPQVINEG
GKPKVLVSYK GENKAFYPEE ISSMVLTKLK ETAEAF LGHP VTNVITVPA
YFNDSQRQAT KDAGVIAGLN VLRIINEPTA AAIAYGLDKG GQGERHVLIF
DLGGGTFDVS ILTIDDGIFE VKATAGDTHL GGEDFDNRLV SHFVEEFKRK
HKKDISQNK RAVRRLRTACE RAKRTLSSST QANLEIDSLY EGIDFYTSIT
RARFEELCAD LFRGTLEPVE KALRDAKMDK AKIHDIVLVG GSTRI PKVQR
LLQDYFNGRD LNK SINPDEA VAYGAAVQAA ILMGDKSEKV QDLLLLDVAP
LSLGLETAGG VMTALIKRNS TIPTKQTQIF TTYSDNQPGV LIQVYEGERA
MTKDNLLGR FDLTGIPPAP RGVPQIEVTF DIDANGILNV TATDKSTGKV
NKITITNDKG RLSKEEIERM VLDAEKYKAE DEVQREKIAA KNALESYAFN
MKS VVSDEGL KGIKISESKN KILDKCNELL SWLEVNQLAE KDEFDHKRKE
LEQMCNPIIT KLYQGGCTGP ACGTGYVPGR PATGPTIEEV D
  
```

[IDENTIFICATION]

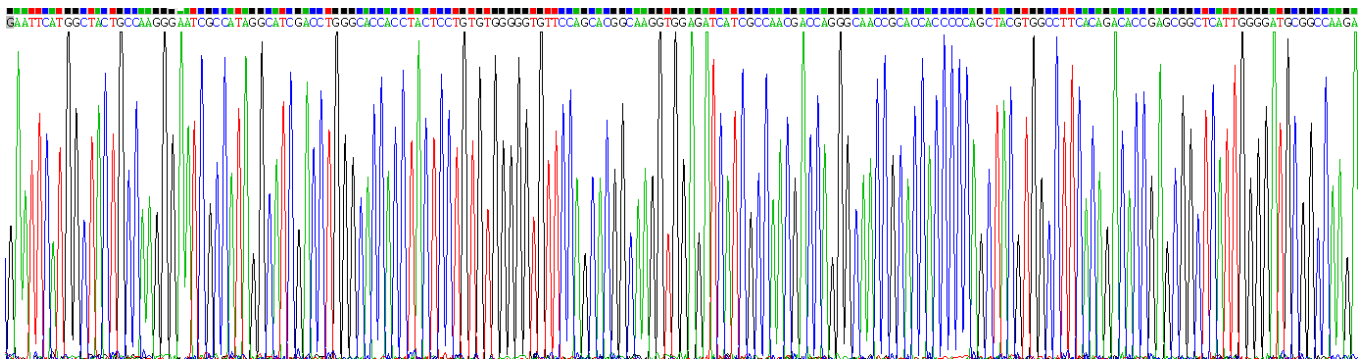


Figure . Gene Sequencing (extract)

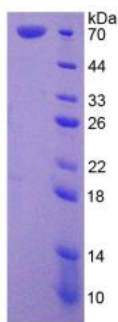


Figure. SDS-PAGE

[IMPORTANT NOTE]

The kit is designed for research use only, we will not be responsible for any issue if the kit was

used in clinical diagnostic or any other procedures.