

RPH975Hu01 10µg

Recombinant Glycosylphosphatidylinositol Specific Phospholipase D1 (GPLD1)

Organism Species: *Homo sapiens (Human)*

Instruction manual

FOR RESEARCH USE ONLY

NOT FOR USE IN CLINICAL DIAGNOSTIC PROCEDURES

12th Edition (Revised in Aug, 2016)

[PROPERTIES]

Source: Prokaryotic expression

Host: *E.coli*

Residues: Met496~Asp840

Tags: N-terminal His Tag

Subcellular Location: Secreted

Purity: > 95%

Traits: Freeze-dried powder

Buffer formulation: 100mMNaHCO₃, 500mMNaCl, pH8.3, containing 0.01% SKL, 5% Trehalose.

Original Concentration: 200µg/mL

Applications: Positive Control; Immunogen; SDS-PAGE; WB.

(May be suitable for use in other assays to be determined by the end user.)

Predicted isoelectric point: 6.9

Predicted Molecular Mass: 40.6kDa

Accurate Molecular Mass: 41kDa as determined by SDS-PAGE reducing conditions.

[USAGE]

Reconstitute in ddH₂O to a concentration of 0.1-1.0 mg/mL. Do not vortex.

[STORAGE AND STABILITY]

Storage: Avoid repeated freeze/thaw cycles.

Store at 2-8°C for one month.

Aliquot and store at -80°C for 12 months.

Stability Test: The thermal stability is described by the loss rate. The loss rate was determined by accelerated thermal degradation test, that is, incubate the protein at 37°C for 48h, and no obvious degradation and precipitation were observed. The loss rate is less than 5% within the expiration date under appropriate storage condition.

[SEQUENCE]

MSSSP

NITISCQDIY CNLGWTL LAA DVNGDSEPD L VIGSPFAPGG GKQKGIVAAF
 YSGPSLSDKE KLNVEAANWT VRGEEDFSWF GYSLHGVTVD NRTLLL VGSP
 TWKNASRLGH LLHIRDEKKS LGRVYGYFPP NGQSWFTISG DKAMGKLGTS
 LSSGHVLMNG TLKQVLLVGA PTYDDVSKVA FLTVTLHQGG ATRMYALTSD
 AQPLLLSTFS GDRRFSRFGG VLHLSLDLDD GLDEIIMAAP LRIADVTSGL
 IGGEDGRVYV YNGKETTLDG MTGKCKSWIT PCPEEKAQYV LISPEASSRF
 GSSLITVRSK AKNQVVIAAG RSSLGARLSG ALHVYSLGSD

[IDENTIFICATION]

ATGTCCTTCCCTACATCCCATTTCTTCGAGGACATCTACTTGGGCTGGACTCTCTTGGCTGCAGATGTGANTGGAGCAGTGAACCCGATCTGGTCACTGGCTCCCTTTTGGACCGGTGGAGSSAAGCAGAGSSAATTGGCTGGGTITTTATCTGGCCCCAGCTGAGGGACAAAGAAAATCTGACGTGGAGCCAGCCACTGGACGGTGGAGGG
 M S S S P N I T I S C Q D I Y C N L G W T L L A A D V N G D S E P D L V I G S P F A P G G G K Q K G I V A A F Y S G P S L S D K E K L N V E A A N W T V R G I

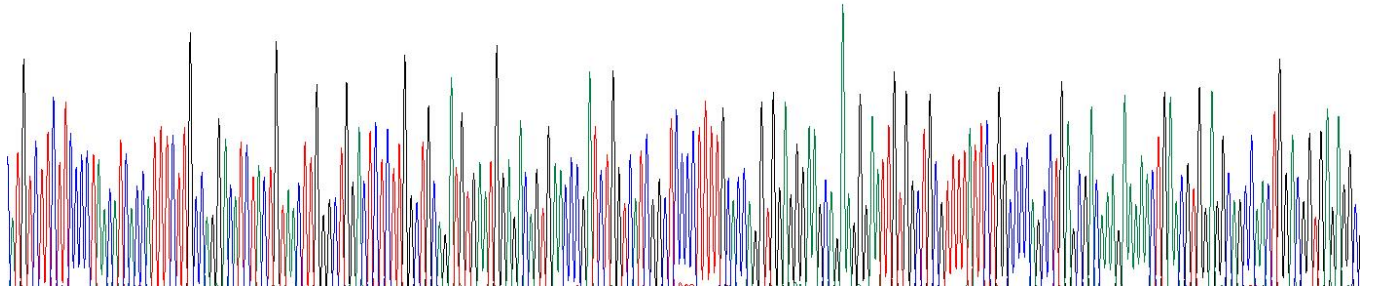
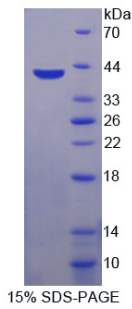


Figure. Gene Sequencing (Extract)



[IMPORTANT NOTE]

The kit is designed for research use only, we will not be responsible for any issue if the kit was used in clinical diagnostic or any other procedures.