

RPB090Hu01 500µg

Recombinant Glutathione S Transferase Pi (GSTp)

Organism Species: *Homo sapiens (Human)*

Instruction manual

FOR RESEARCH USE ONLY

NOT FOR USE IN CLINICAL DIAGNOSTIC PROCEDURES

13th Edition (Revised in Aug, 2023)

[PROPERTIES]

Source: Prokaryotic expression

Host: *E.coli*

Residues: Met1-Gln210

Tags: N-terminal His Tag

Subcellular Location: Nucleus, Mitochondrion, Cytoplasm

Purity: > 97%

Traits: Freeze-dried powder

Buffer formulation: 20mM Tris, 150mM NaCl, pH8.0, containing 0.01% skl, 5%Trehalose.

Original Concentration: 400µg/mL

Applications: Positive Control; Immunogen; SDS-PAGE; WB.

(May be suitable for use in other assays to be determined by the end user.)

Predicted isoelectric point: 6.2

Predicted Molecular Mass: 24.5kDa

Accurate Molecular Mass: 25kDa as determined by SDS-PAGE reducing conditions.

[USAGE]

Reconstitute in 20mM Tris, 150mM NaCl (pH8.0) to a concentration of 0.1-1.0 mg/mL. Do not vortex.

[STORAGE AND STABILITY]

Storage: Avoid repeated freeze/thaw cycles.

Store at 2-8°C for one month.

Aliquot and store at -80°C for 12 months.

Stability Test: The thermal stability is described by the loss rate. The loss rate was determined by accelerated thermal degradation test, that is, incubate the protein at 37°C for 48h, and no obvious degradation and precipitation were observed. The loss rate is less than 5% within the expiration date under appropriate storage condition.

[SEQUENCE]

MPPYTVVYFP VRGRCAALRM LLADQGQSWK EEVTVETWQ EGSLKASCLY
GQLPKFQDGD LTLYQSNTIL RHLGRTLGLY GKDQQAALV DMVNDGVEDL
RKYISLIYT NYEAGKDDYV KALPGQLKPF ETLLSQNQG KTFIVGDQIS
FADYNLLDLL LIHEVLAPGC LDAFPLLSAY VGRLSARPKL KAFLASPEYV
NLPINGNGKQ

[IDENTIFICATION]

CAATGCGGCGCTACAGCGTGGTCTATTTCAGTTCGAGGDDCTGCGCGGCGCTGCGCAATGCTGCTGGGATCGAGGCGAGGCTGGAGGAGGAGTGGTGGAGCGTGGCGAGGCGTCACTCAAGGCTCCTGCTCCTATAGCGGCGAGCTCCCGAGTTCGAGGCGAGGCGCTCAAGCTGTACCGTCAATACCATCTCGGTCGCTGGG
M P P Y T V V Y F P V R G R C A A L R M L L A D Q G Q S W K E E V V T V E T W Q E G S L K A S C L Y G Q L P K F Q D G D L T L Y Q S N T I L R H L G

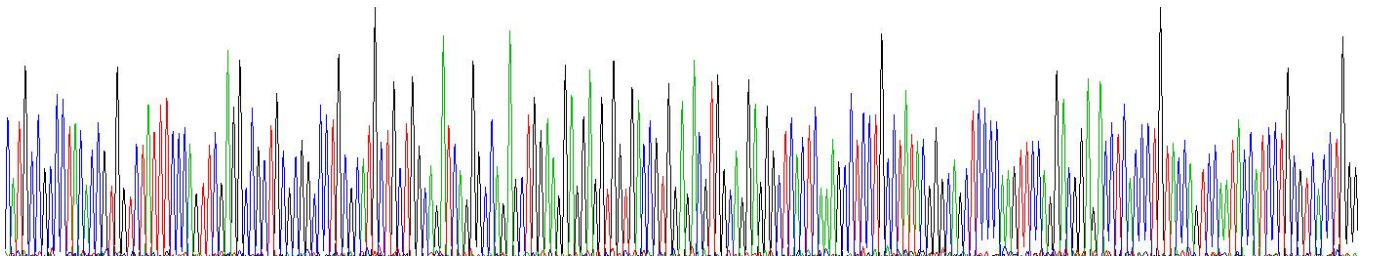
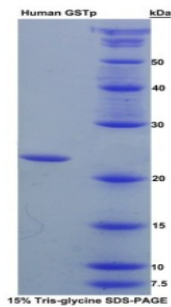


Figure. Gene Sequencing (Extract)



[IMPORTANT NOTE]

The kit is designed for research use only, we will not be responsible for any issue if the kit was used in clinical diagnostic or any other procedures.