

RPE802Hu01 10µg
Recombinant Glutamate Receptor, Ionotropic, AMPA 2 (GRIA2)
Organism Species: *Homo sapiens (Human)*
Instruction manual

FOR RESEARCH USE ONLY
NOT FOR USE IN CLINICAL DIAGNOSTIC PROCEDURES

13th Edition (Revised in Aug, 2023)

[PROPERTIES]

Source: Prokaryotic expression

Host: *E.coli*

Residues: Asn413~Lys527

Tags: N-terminal His Tag

Subcellular Location: Membrane, Endoplasmic reticulum lumen

Purity: > 90%

Traits: Freeze-dried powder

Buffer formulation: PBS, pH7.4, containing 0.01% SKL, 5% Trehalose .

Original Concentration: 350µg/mL

Applications: Positive Control; Immunogen; SDS-PAGE; WB.

(May be suitable for use in other assays to be determined by the end user.)

Predicted isoelectric point: 7.4

Predicted Molecular Mass: 16.5KDa

Accurate Molecular Mass: 17KDa as determined by SDS-PAGE reducing conditions.

[USAGE]

Reconstitute in 10mM PBS (pH7.4) to a concentration of 0.1-1.0 mg/mL. Do not vortex.

[STORAGE AND STABILITY]

Storage: Avoid repeated freeze/thaw cycles.

Store at 2-8°C for one month.

Aliquot and store at -80°C for 12 months.

Stability Test: The thermal stability is described by the loss rate. The loss rate was determined by accelerated thermal degradation test, that is, incubate the protein at 37°C for 48h, and no obvious degradation and precipitation were observed. The loss rate is less than 5% within the expiration date under appropriate storage condition.

[SEQUENCE]

NKTVVTT ILESPYVMMK KNHEMLEGNE RYEGYCVDLA
 AEIAKHCGFK YKLTIVGDGK YGARDADTKI WNGMVGELVY GKADIAIAPL
 TITLVREEVI DFSKPFMSLG ISIMIKK

[IDENTIFICATION]

⁵A T A G C T G T G T G T G C C C A A T T T G G A T C T C G A G T A T G Y G A G A A A T C A T G A T C T T G A G C C A A T G C C C T A T G C C C T A C T G T G T G C C C C C A G A A T C C C A A C A T T G C C G T C A G T C A G T G C A A T T G T T G G G A T C C C A G A T G C C C C C C G C G C A C G A A T T T G G A T C C G A T G C C G A C T T G A T A T C C G A A C T G A T T G C
 N K T V V T T I L E S P Y V M M K K N H E M L E G N E R Y E G Y C V D L A A E I A K H C G F K Y K L T I V G D G K Y G A R D A D T K I W N G M V G E L V Y G K A D I A

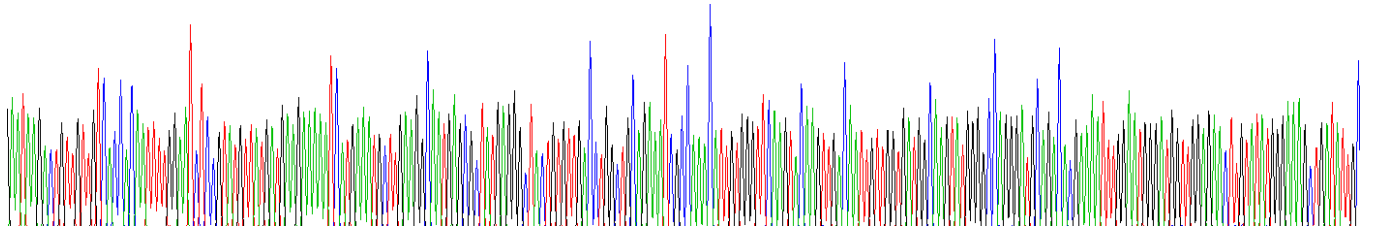


Figure. Gene Sequencing (Extract)

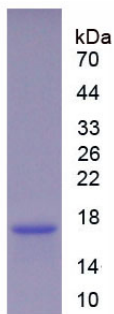


Figure. SDS-PAGE

[IMPORTANT NOTE]

The kit is designed for research use only, we will not be responsible for any issue if the kit was used in clinical diagnostic or any other procedures.