

**RPE529Mu01 10µg**

**Recombinant Gasdermin D (GSDMD)**

**Organism Species: *Mus musculus* (Mouse)**

***Instruction manual***

FOR RESEARCH USE ONLY

NOT FOR USE IN CLINICAL DIAGNOSTIC PROCEDURES

---

13th Edition (Revised in Aug, 2023)

## [ **PROPERTIES** ]

**Source:** Prokaryotic expression

**Host:** *E.coli*

**Residues:** Met1~Gln325

**Tags:** N-terminal His Tag

**Subcellular Location:** Membrane, Cytoplasm, Extracellular matrix

**Purity:** > 95%

**Traits:** Freeze-dried powder

**Buffer formulation:** 20mM Tris, 150mM NaCl, pH8.0, containing 0.01% skl, 5%Trehalose.

**Original Concentration:** 120µg/mL

**Applications:** Positive Control; Immunogen; SDS-PAGE; WB.

(May be suitable for use in other assays to be determined by the end user.)

**Predicted isoelectric point:** 6.0

**Predicted Molecular Mass:** 39.5KDa

**Accurate Molecular Mass:** 40kDa as determined by SDS-PAGE reducing conditions.

## [ **USAGE** ]

Reconstitute in 20mM Tris, 150mM NaCl (pH8.0) to a concentration of 0.1-1.0 mg/mL. Do not vortex.

## [ **STORAGE AND STABILITY** ]

**Storage:** Avoid repeated freeze/thaw cycles.

Store at 2-8°C for one month.

Aliquot and store at -80°C for 12 months.

**Stability Test:** The thermal stability is described by the loss rate. The loss rate was determined by accelerated thermal degradation test, that is, incubate the protein at 37°C for 48h, and no obvious degradation and precipitation were observed. The loss rate is less than 5% within the expiration date under appropriate storage condition.

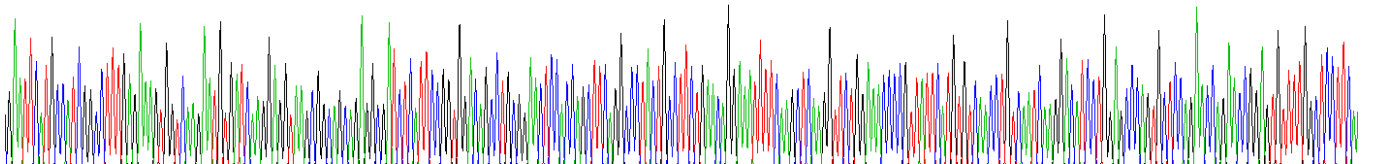
## [ **SEQUENCE** ]

```

MPSAFEKVVK  NVIKEVSGSR  GDLIPVDSLRL  NSTSFRPYCL  LNRKFSSSRF
WKPRYSCVNL  SIKDILEPSA  PEPEPECFGS  FKVSDVVDGN  IQGRVMLSGM
GEGKISGGAA  VSDSSSASMN  VCILRVQTQT  WETMQHERHL  QQPENKILQQ
LRSRGDDLFDV  VTEVLQTKKE  VQITEVHSQE  GSGQFTLPGA  LCLKGEGKGH
QSRKKMVTIP  AGSILAFRVA  QLLIGSKWDI  LLVSDEKQRT  FEPSSGDRKA
VGQRHHGLNV  LAALCSIGKQ  LSLLSDGIDE  EELIEAADFQ  GLYAEVKACS
SELESLEMEL  RQQILVNIGK  ILQDQ
  
```

**[ IDENTIFICATION ]**

GAATTCATCCATCCCTTTGAGAGCGTAAAGATGCTAGGAGGAGAGGCGCCGAGGCGGATCTATTCCGCGAGCCCTCCGAACTCCGCGCTTGAAGCCCTCTGAGCCCTCTGAGCGGAAATTTGAGCTGAGGCTCTGGACCCGATATCATGGTGCATCAGGATCCCTGGAGCCGAGCTCCGAGCCGAGCCGAGGCTTTGGCTCTCA



**Figure . Gene Sequencing (extract)**

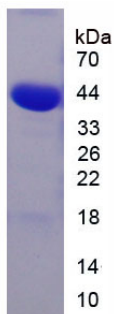


Figure. SDS-PAGE

**[ IMPORTANT NOTE ]**

The kit is designed for research use only, we will not be responsible for any issue if the kit was used in clinical diagnostic or any other procedures.