

RPF421Hu01 50ug

Recombinant Fibulin 4 (FBLN4)

Organism Species: *Homo sapiens (Human)*

Instruction manual

FOR RESEARCH USE ONLY

NOT FOR USE IN CLINICAL DIAGNOSTIC PROCEDURES

12th Edition (Revised in Aug, 2016)

[PROPERTIES]

Source: Prokaryotic expression

Host: *E.coli*

Residues: Ser26~Phe443

Tags: N-terminal His and GST Tag

Subcellular Location: Secreted

Purity: > 95%

Traits: Freeze-dried powder

Buffer formulation: PBS, pH7.4, containing 0.01% SKL, 5% Trehalose.

Original Concentration: 50µg/mL

Applications: Positive Control; Immunogen; SDS-PAGE; WB.

(May be suitable for use in other assays to be determined by the end user.)

Predicted isoelectric point: 5.3

Predicted Molecular Mass: 76.8kDa

Accurate Molecular Mass: 77kDa as determined by SDS-PAGE reducing conditions.

[USAGE]

Reconstitute in ddH₂O to a concentration of 0.1-0.2 mg/mL. Do not vortex.

[STORAGE AND STABILITY]

Storage: Avoid repeated freeze/thaw cycles.

Store at 2-8°C for one month.

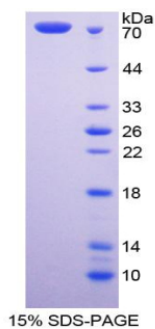
Aliquot and store at -80°C for 12 months.

Stability Test: The thermal stability is described by the loss rate. The loss rate was determined by accelerated thermal degradation test, that is, incubate the protein at 37°C for 48h, and no obvious degradation and precipitation were observed. The loss rate is less than 5% within the expiration date under appropriate storage condition.

[SEQUENCE]

SPQDS EEPDSYTECT DGYEWDPSQ
HCRDVNECLT IPEACKGEMK CINHYGGYLC LPRSAVIND LHGEGPPPV
PPAQHPNPCP PGYEPDDQDS CVDVDECAQA LHDCRPSQDC HNLPGSYQCT
CPDGYRKIGP ECVDIDECRY RYCQHRCVNL PGSFRCQCEP GFQLGPNNRS
CVDVNECDMG APCEQRCFNS YGTFLCRCHQ GYELHRDGFS CSDIDECSYS
SYLCQYRCIN EPGRFSCHCP QGYQLLATRL CQDIDECESEG AHQCSEAQTC
VNFHGGYRCV DTNRCVEPYI QVSENRLCP ASNPLCREQP SSIVHRYMTI
TSERSVPADV FQIQATSVYP GAYNAFQIRA GNSQGDFYIR QINNVSAMLV
LARPVTGPRE YVLDLEMVTM NSLMSYRASS VLRLTVFVGA YTF

[IDENTIFICATION]



[IMPORTANT NOTE]

The kit is designed for research use only, we will not be responsible for any issue if the kit was used in clinical diagnostic or any other procedures.