

RPA038Mu01 20µg

Recombinant FMS Like Tyrosine Kinase 3 Ligand (Flt3L)

Organism Species: *Mus musculus* (Mouse)

Instruction manual

FOR RESEARCH USE ONLY

NOT FOR USE IN CLINICAL DIAGNOSTIC PROCEDURES

13th Edition (Revised in Aug, 2023)

[PROPERTIES]

Source: Prokaryotic expression

Host: *E.coli*

Residues: Gly27~Gln189

Tags: N-terminal His Tag

Subcellular Location: Membrane, Secreted

Purity: > 80%

Traits: Freeze-dried powder

Buffer formulation: PBS, pH7.4, containing 0.01% SKL, 5% Trehalose.

Original Concentration: 100µg/mL

Applications: Positive Control; Immunogen; SDS-PAGE; WB.

(May be suitable for use in other assays to be determined by the end user.)

Predicted isoelectric point: 7.1

Predicted Molecular Mass: 22.2kDa

Accurate Molecular Mass: 22&25kDa as determined by SDS-PAGE reducing conditions.

[USAGE]

Reconstitute in ddH₂O to a concentration of 0.1-0.2 mg/mL. Do not vortex.

[STORAGE AND STABILITY]

Storage: Avoid repeated freeze/thaw cycles.

Store at 2-8°C for one month.

Aliquot and store at -80°C for 12 months.

Stability Test: The thermal stability is described by the loss rate. The loss rate was determined by accelerated thermal degradation test, that is, incubate the protein at 37°C for 48h, and no obvious degradation and precipitation were observed. The loss rate is less than 5% within the expiration date under appropriate storage condition.

[SEQUENCE]

```
GTPD  CYFSHSPISS  NFKVKFRELT
DHLLKDYPVT  VAVNLQDEKH  CKALWSLFLA  QRWIEQLKTV  AGSKMQTLLE
DVNTEIHFTV  SCTFQPLPEC  LRFVQTNISH  LLKDTCTQLL  ALKPCIGKAC
QNFSRCLEVQ  CQPSSTLLP  PRSPIALEAT  ELPEPRPRQ
```

[**IDENTIFICATION**]

CGGAGCTGAGTACTGCGCTGCATCCTCATCAGTGGGAGTGGGAGTCTGCACTTTAGATTCTGGTACTGCGTGCATCTGGAGTGGAGTCTGTGGCTCTCTGAGTGGTGGAGCTGAGCAGCTGGGAGCTAGAGTGAGCGCTCTGCGAGTCAGCTGGCAATTGCGCTGAGCTCTGG
G T P D C Y F S H S P I S S N F K V K F R E L T D H L L K D Y P V T V A V N L Q D E K H C K A L W S L F L A Q R W I E Q L K T V A G S K M Q T L L E D V N T E I H F V T S C T F Q

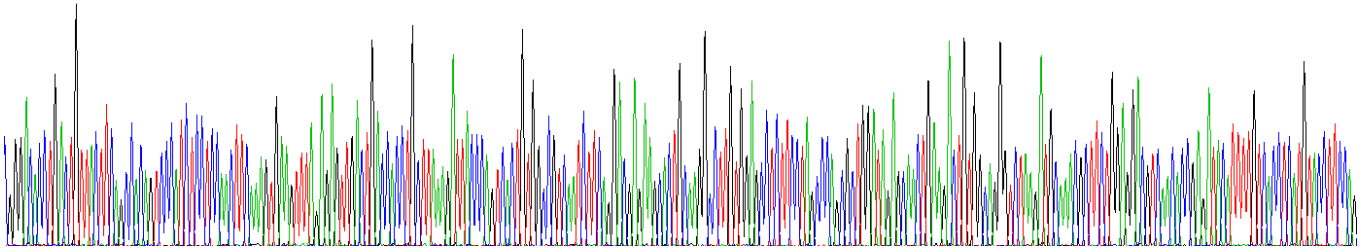


Figure. Gene Sequencing (Extract)

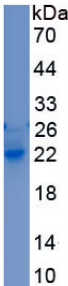


Figure. SDS-PAGE

[**IMPORTANT NOTE**]

The kit is designed for research use only, we will not be responsible for any issue if the kit was used in clinical diagnostic or any other procedures.