

RPC460Hu01 100µg

Recombinant Endoplasmic Reticulum To Nucleus Signalling 1 (ERN1)

Organism Species: Homo sapiens (Human)

Instruction manual

FOR IN VITRO USE AND RESEARCH USE ONLY

NOT FOR USE IN CLINICAL DIAGNOSTIC PROCEDURES

10th Edition (Revised in Jan, 2014)

[PROPERTIES]

Residues: Phe571~Phe832

Tags: Two N-terminal Tags, His-tag and T7-tag

Accession: O75460

Host: *E. coli*

Subcellular Location: Endoplasmic reticulum membrane; Single-pass type I membrane protein.

Purity: >95%

Endotoxin Level: <1.0EU per 1µg
(determined by the LAL method).

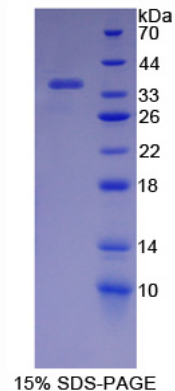
Formulation: Supplied as lyophilized form in PBS, pH7.4, containing 5% trehalose, 0.01% sarcosyl.

Predicted isoelectric point: 6.6

Predicted Molecular Mass: 33.3kDa

Applications: SDS-PAGE; WB; ELISA; IP.

(May be suitable for use in other assays to be determined by the end user.)



[USAGE]

Reconstitute in sterile PBS, pH7.2-pH7.4.

[STORAGE AND STABILITY]

Storage: Avoid repeated freeze/thaw cycles.

Store at 2-8°C for one month.

Aliquot and store at -80°C for 12 months.

Stability Test: The thermal stability is described by the loss rate of the target protein. The loss rate was determined by accelerated thermal degradation test, that is, incubate the protein at 37°C for 48h, and no obvious degradation and precipitation were observed. (Referring from China Biological Products Standard, which was calculated by the Arrhenius equation.) The loss of this protein is less than 5% within the expiration date under appropriate storage condition.

[SEQUENCES]

The sequence of the target protein is listed below.

FCPKDVLGHG AEGTIVYRGM FDNRDVAVKR ILPECFSFAD REVQLLRES D EHPNVIRYFC
TEKDRQFQYI AIELCAATLQ EYVEQKDFAH LGLEPITLLQ QTTSGLAHLH SLNIVHRDLK
PHNILISMPN AHGKIKAMIS DFGLCKKLAV GRHSFSRRSG VPGTEGWIAP EMLSEDCKEN
PTYTVDIFSA GCVFYVISE GSHPFGKSLQ RQANILLGAC SLDCLHPEKH EDVIARELIE
KMIAMDPQKR PSAKHVLKHP FF