

**RPB240Hu01 200µg**

**Recombinant Cytokeratin 20 (CK 20)**

**Organism Species: *Homo sapiens (Human)***

***Instruction manual***

FOR RESEARCH USE ONLY

NOT FOR USE IN CLINICAL DIAGNOSTIC PROCEDURES

---

12th Edition (Revised in Aug, 2016)

**[ PROPERTIES ]**

**Source:** Prokaryotic expression

**Host:** *E.coli*

**Residues:** His9~Ile424

**Tags:** N-terminal His Tag

**Subcellular Location:** Cytoplasm

**Purity:** > 95%

**Traits:** Freeze-dried powder

**Buffer formulation:** 20mM Tris, 150mM NaCl, pH8.0, containing 0.01% SKL, 5% Trehalose.

**Original Concentration:** 400µg/mL

**Applications:** Positive Control; Immunogen; SDS-PAGE; WB.

(May be suitable for use in other assays to be determined by the end user.)

**Predicted isoelectric point:** 5.9

**Predicted Molecular Mass:** 51.2kDa

**Accurate Molecular Mass:** 51kDa as determined by SDS-PAGE reducing conditions.

**[ USAGE ]**

Reconstitute in 20mM Tris, 150mM NaCl (pH8.0) to a concentration of 0.1-1.0 mg/mL. Do not vortex.

**[ STORAGE AND STABILITY ]**

**Storage:** Avoid repeated freeze/thaw cycles.

Store at 2-8°C for one month.

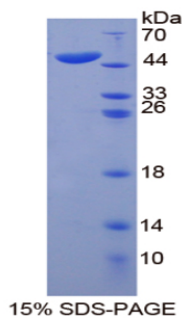
Aliquot and store at -80°C for 12 months.

**Stability Test:** The thermal stability is described by the loss rate. The loss rate was determined by accelerated thermal degradation test, that is, incubate the protein at 37°C for 48h, and no obvious degradation and precipitation were observed. The loss rate is less than 5% within the expiration date under appropriate storage condition.

**[ SEQUENCE ]**

HR SLSSSLQAPV VSTVGMQRLG TTPSVYGGAG GRGIRISNSR  
HTVNYGSDLT GGGDLFVGN E KMAMQNLNDR LASYLEKVRT LEQSNSKLEV  
QIKQWYETNA PRAGRDYSAY YRQIEELRSQ IKDAQLQNR CVLQIDNAKL  
AAEDFRLKYE TERGIRLTVE ADLQGLNKVF DDLTLHKTDL EIQIEELNKD  
LALLKKEHQE EVDGLHKHLG NTVNVEVDAA PGLNLGVIMN EMRQKYEVMA  
QKNLQEAKEQ FERQTAVLQQ QVTVNTEELK GTEVQLTELRTS QSLEIEL  
QSHLSMKESL EHTLEETKAR YSSQLANLQS LLSLEAQLM QIRSNMERQN  
NEYHILLDIK TRLEQEIATY RRLLEGEDVK TTEYQLSTLE ERDIKKTRKI  
KTVVQEVVDG KVSSEVKEV EENI

**[ IDENTIFICATION ]**



**[ IMPORTANT NOTE ]**

The kit is designed for research use only, we will not be responsible for any issue if the kit was used in clinical diagnostic or any other procedures.