

**RPA758Hu01 50µg**

**Recombinant Complement Component 3c (C3c)**

**Organism Species: Homo sapiens (Human)**

***Instruction manual***

FOR IN VITRO USE AND RESEARCH USE ONLY

NOT FOR USE IN CLINICAL DIAGNOSTIC PROCEDURES

---

---

11th Edition (Revised in May, 2016)

## **[ PROPERTIES ]**

**Source:** Prokaryotic expression.

**Host:** *E. coli*

**Residues:** Glu1322~Cys1661

**Tags:** N-terminal His-Tag

**Purity:** >92%

**Traits:** Freeze-dried powder

**Buffer formulation:** PBS, pH7.4, containing 1mM DTT, 5% trehalose, 0.01% sarcosyl and Proclin300.

**Original Concentration:** 200ug/mL

**Applications:** SDS-PAGE; WB; ELISA; IP; CoIP; Reporter Assays; Purification; Amine Reactive Labeling.

(May be suitable for use in other assays to be determined by the end user.)

**Predicted isoelectric point:** 4.9

**Predicted Molecular Mass:** 44.9kDa

**Accurate Molecular Mass:** 46kDa as determined by SDS-PAGE reducing conditions.

## **[ USAGE ]**

Reconstitute in PBS (pH7.4) to a concentration of 0.1-1.0 mg/mL. Do not vortex.

## [ STORAGE AND STABILITY ]

**Storage:** Avoid repeated freeze/thaw cycles.

Store at 2-8°C for one month.

Aliquot and store at -80°C for 12 months.

**Stability Test:** The thermal stability is described by the loss rate. The loss rate was determined by accelerated thermal degradation test, that is, incubate the protein at 37°C for 48h, and no obvious degradation and precipitation were observed. The loss rate is less than 5% within the expiration date under appropriate storage condition.

## [ SEQUENCE ]

```

                                EETKENEGF TVTAEGKGQG TLSVVTMYHA
KAKDQLTCNK FDLKVTIKPA PETEKRPQDA KNTMILEICT RYRGDQDATM
SILDISMMTG FAPDTHDLKQ LANGVDYRIS KYELDKAFSD RNTLIIYLDK
VSHSEDDCLA FKVHQYFNVE LIQPGAVKVY AYYNLEESCT RFYHPEKEDG
KLNKLCRDEL CRCAEENCFI QKSDDKVTLE ERLDKACEPG VDYVYKTRLV
KVQLSNDFDE YIMAIEQTIK SGSDEVQVGQ QRTFISPIKC REALKLEEKK
HYLMWGLSSD FWGKPNLSY IIGKDTWVEH WPPEEDCQDE ENQKQCQDLG
AFTESMVVFG C

```

## [ IDENTIFICATION ]

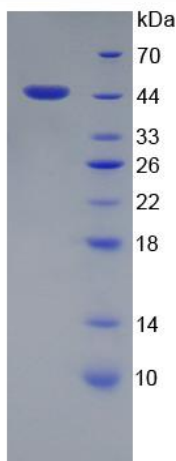


Figure 1. SDS-PAGE