



RPQ635Hu01 100µg

Recombinant CUB And Zona Pellucida Like Domains Protein 1 (CUZD1)

Organism Species: Homo sapiens (Human)

Instruction manual

FOR IN VITRO USE AND RESEARCH USE ONLY
NOT FOR USE IN CLINICAL DIAGNOSTIC PROCEDURES

12th Edition (Revised in Aug, 2016)

[PROPERTIES]

Source: Prokaryotic expression.

Host: *E. coli*

Residues: Pro218~Arg479

Tags: N-terminal His-Tag

Tissue Specificity: Pancreas, Brain, Lung.

Subcellular Location: Cytoplasmic vesicle, secretory vesicle membrane;
Single-pass type I membrane protein.

Purity: >98%

Traits: Freeze-dried powder

Buffer formulation: 20mM Tris, 150mM NaCl, pH8.0, containing 1mM EDTA, 1mM DTT, 0.01% sarcosyl, 5%Trehalose and Proclin300.

Original Concentration: 200µg/mL

Applications: Positive Control; Immunogen; SDS-PAGE; WB.

(May be suitable for use in other assays to be determined by the end user.)

Predicted isoelectric point: 6.0

Predicted Molecular Mass: 59.0kDa

Accurate Molecular Mass: 59kDa as determined by SDS-PAGE reducing conditions.

[USAGE]

Reconstitute in 20mM Tris, 150mM NaCl (pH8.0) to a concentration of 0.1-1.0 mg/mL. Do not vortex.

[STORAGE AND STABILITY]

Storage: Avoid repeated freeze/thaw cycles.

Store at 2-8°C for one month.

Aliquot and store at -80°C for 12 months.

Stability Test: The thermal stability is described by the loss rate. The loss rate was determined by accelerated thermal degradation test, that is, incubate the protein at 37°C for 48h, and no obvious degradation and precipitation were observed. The loss rate is less than 5% within the expiration date under appropriate storage condition.

[SEQUENCE]

```

          PST NSGLIGQVCG RVTPTFESS NSLTVVLSTD
YANSYRGFSA SYTSIYAENI NTTSLTCSSD RMRVIISKSY LEAFNSNGNN
LQLKDPTCRP KLSNVVEFSV PLNGCGTIRK VEDQSITYTN IITFSASSTS
EVITRQKQLQ IIVKCEMGHN STVEIIYITE DDVIQSQNAL GKYNTSMALF
ESNSFEKIL  ESPYYVDLNQ TLFVQVSLHT SDPNLVVFLD TCRASPTSDF
ASPTYDLIKS GCSRDETCKV YPLFGHYGR
    
```

[IDENTIFICATION]

PSTNSGLIGQVCGRVTPTFESSNSLTVVLSTDYANSYRGFSA SYTSIYAENINNTTSLTCSSDRMRVIISKSYLEAFNSNGNNLQLKDPTCRPKLS

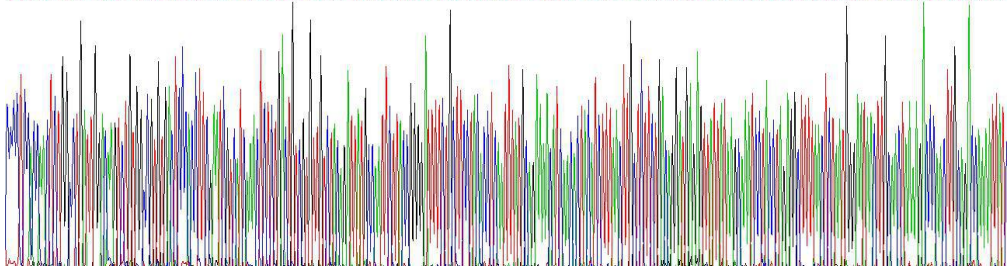


Figure 1. Gene Sequencing (Extract)

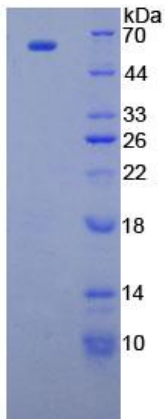


Figure 2. SDS-PAGE