

RPB614Hu01 100µg

Recombinant C-Type Lectin Domain Family 4, Member L (CLEC4L)

Organism Species: Homo sapiens (Human)

Instruction manual

FOR IN VITRO USE AND RESEARCH USE ONLY

NOT FOR USE IN CLINICAL DIAGNOSTIC PROCEDURES

10th Edition (Revised in Jan, 2014)

[PROPERTIES]

Residues: Glu70~Ala404

Tags: Two N-terminal Tags, His-tag and T7-tag

Accession: Q9NNX6

Host: *E. coli*

Subcellular Location: Cell membrane. Single-pass type II membrane protein. Secreted.

Purity: >90%

Endotoxin Level: <1.0EU per 1µg
(determined by the LAL method).

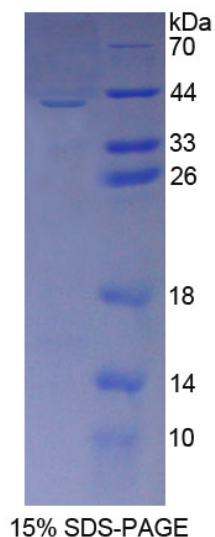
Formulation: Supplied as lyophilized form in PBS, pH7.4, containing 5% trehalose, 0.01% sarcosyl.

Predicted isoelectric point: 5.2

Predicted Molecular Mass: 42.0kDa

Applications: SDS-PAGE; WB; ELISA; IP.

(May be suitable for use in other assays to be determined by the end user.)



[USAGE]

Reconstitute in sterile PBS, pH7.2-pH7.4.

[STORAGE AND STABILITY]

Storage: Avoid repeated freeze/thaw cycles.

Store at 2-8°C for one month.

Aliquot and store at -80°C for 12 months.

Stability Test: The thermal stability is described by the loss rate of the target protein. The loss rate was determined by accelerated thermal degradation test, that is, incubate the protein at 37°C for 48h, and no obvious degradation and precipitation were observed. (Referring from China Biological Products Standard, which was calculated by the Arrhenius equation.) The loss of this protein is less than 5% within the expiration date under appropriate storage condition.

[SEQUENCES]

The sequence of the target protein is listed below.

E QSRQDAIYQN LTQLKAAVGE LSEKSKLQEI YQELTQLKAA VGELPEKSKL QEIQELTRL
KAAVGELPEK SKLQEIQEL TWLKAAVGEL PEKSKMQEIQ QELTRLKAAV GELPEKSKQQ
EIQELTRLK AAVGELPEKS KQQEIQELT RLKAAVGELP EKSKQQEIQ ELTQLKAAVE
RLCHPCPWEW TFFQGNCYFM SNSQRNWHDS ITACKEVGAQ LVVIKSAEEQ
NFLQLQSSRS NRFTWMGLSD LNQEGTWQWV DGSPLLPSFK QYWNRGEPNN
VGEEEDCAEFS GNGWNDDKCN LAKFWICKKS AASCSRDEEQ FLSPAPATPN PPPA