

**RPB850Hu01 200µg**

**Recombinant Beta-1,4-Galactosyltransferase 1 (b4GALT1)**

**Organism Species: *Homo sapiens (Human)***

***Instruction manual***

**FOR RESEARCH USE ONLY**

**NOT FOR USE IN CLINICAL DIAGNOSTIC PROCEDURES**

---

12th Edition (Revised in Aug, 2016)

## **[ PROPERTIES ]**

**Source:** Prokaryotic expression

**Host:** *E.coli*

**Residues:** Arg45~Ser398

**Tags:** N-terminal His Tag

**Subcellular Location:** Membrane, Secreted, Golgi apparatus

**Purity:** > 97%

**Traits:** Freeze-dried powder

**Buffer formulation:** 20mM Tris, 150mM NaCl, pH8.0, containing 0.01% skl, 5%Trehalose.

**Original Concentration:** 200µg/mL

**Applications:** Positive Control; Immunogen; SDS-PAGE; WB.

(May be suitable for use in other assays to be determined by the end user.)

**Predicted isoelectric point:** 8.4

**Predicted Molecular Mass:** 43.0kDa

**Accurate Molecular Mass:** 44kDa as determined by SDS-PAGE reducing conditions.

## **[ USAGE ]**

Reconstitute in 20mM Tris, 150mM NaCl (pH8.0) to a concentration of 0.1-1.0 mg/mL. Do not vortex.

## **[ STORAGE AND STABILITY ]**

**Storage:** Avoid repeated freeze/thaw cycles.

Store at 2-8°C for one month.

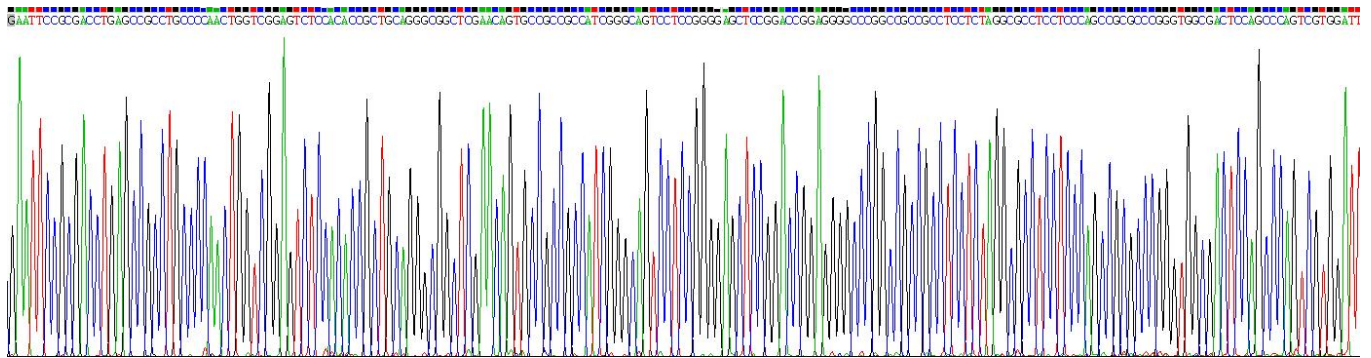
Aliquot and store at -80°C for 12 months.

**Stability Test:** The thermal stability is described by the loss rate. The loss rate was determined by accelerated thermal degradation test, that is, incubate the protein at 37°C for 48h, and no obvious degradation and precipitation were observed. The loss rate is less than 5% within the expiration date under appropriate storage condition.

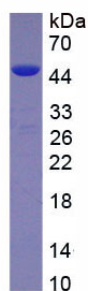
## **[ SEQUENCE ]**

RDLSRL  
PQLVGVSTPL QGGSNSAAAI QSSGELRTG GARPPPPLGA SSQPRPGGDS  
SPVVDSPGP ASNLTSVPVP HTTALSLPAC PEESPLLVP MLIEFNMPVD  
LELVAKQNP VKMGGRYAPR DCVSPHKVAI IIPFRNRQEH LKYWLYYLHP  
VLQRQQLDYG IYVINQAGDT IFNRAKLLNV GFQEALKDYD YTCFVFSDVD  
LIPMNDHNAY RCFSQPRHIS VAMDKFGFSL PYVQYFGGVS ALSKQQLTI  
NGFPNNYWG GGEDDDIFNR LVFRGMSISR PNAVVGRCRM IRHSRDKKNE  
PNPQRFDRIA HTKETMLSDG LNSLTYQVLD VQRYPLYTQI TVDIGTPS

## [ IDENTIFICATION ]



**Figure . Gene Sequencing (extract)**



**Figure. SDS-PAGE**

## [ IMPORTANT NOTE ]

The kit is designed for research use only, we will not be responsible for any issue if the kit was used in clinical diagnostic or any other procedures.