

**RPC321Hu01 200µg**

**Recombinant Asporin (ASPN)**

**Organism Species: *Homo sapiens (Human)***

***Instruction manual***

FOR RESEARCH USE ONLY

NOT FOR USE IN CLINICAL DIAGNOSTIC PROCEDURES

---

12th Edition (Revised in Aug, 2016)

**[ PROPERTIES ]**

**Source:** Prokaryotic expression

**Host:** *E.coli*

**Residues:** Phe57~Met371

**Tags:** N-terminal His Tag

**Subcellular Location:** Secreted, Extracellular matrix

**Purity:** > 95%

**Traits:** Freeze-dried powder

**Buffer formulation:** 100mMNaHCO<sub>3</sub>, 500mMNaCl, pH8.3, containing 0.01% SKL, 5% Trehalose.

**Original Concentration:** 200µg/mL

**Applications:** Positive Control; Immunogen; SDS-PAGE; WB.

(May be suitable for use in other assays to be determined by the end user.)

**Predicted isoelectric point:** 9.5

**Predicted Molecular Mass:** 39.7kDa

**Accurate Molecular Mass:** 40kDa as determined by SDS-PAGE reducing conditions.

**[ USAGE ]**

Reconstitute in ddH<sub>2</sub>O to a concentration of 0.1-1.0 mg/mL. Do not vortex.

**[ STORAGE AND STABILITY ]**

**Storage:** Avoid repeated freeze/thaw cycles.

Store at 2-8°C for one month.

Aliquot and store at -80°C for 12 months.

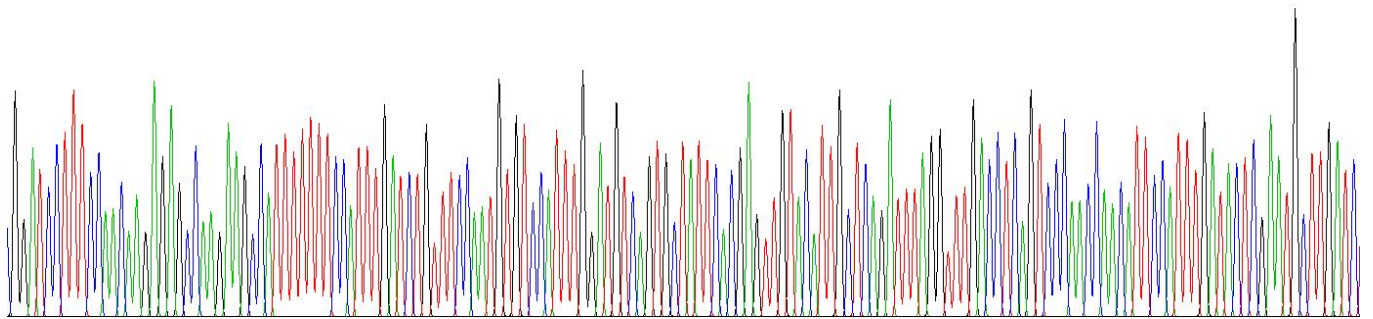
**Stability Test:** The thermal stability is described by the loss rate. The loss rate was determined by accelerated thermal degradation test, that is, incubate the protein at 37°C for 48h, and no obvious degradation and precipitation were observed. The loss rate is less than 5% within the expiration date under appropriate storage condition.

**[ SEQUENCE ]**

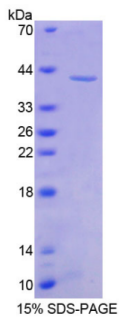
FPTR EPRSHFFPFD LFPMCPFGCQ CYSRVVHCSD LGLTSVPTNI  
 PFDTRMLDLQ NNKIKEIKEN DFKGLTSLYG LILNNKLTG IHPKAFLTTK  
 KLRRLYLSHN QLSEIPLNLP KSLAELRIHE NKVKKIQKDT FKGMLHVL  
 EMSANPLDNN GIEPGAFEGV TVFHIRIAEA KLTSVPKGLP PTLLELHLDY  
 NKISTVELED FKRYKELQRL GLGNKITDI ENGLANIPR VREIHLENNK  
 LKKIPSGLPE LKYLQIIFLH SNSIARVGVN DFCPTVPKMK KSLYSAISLF  
 NNPVKYWEMQ PATFRCVLSR M

**[ IDENTIFICATION ]**

GGATCCTTTCCAAAGAGAGCCAA GAAGCCATTTTTTTCATTGATCTGTTTCCAAATGTGCCATTTGGATGTCAGTGCTATTACAGATTGTACATTGCTCAGATTAGGT TTGACCTCAGTCCCAACCAACATTCCATTGATACTCGAATGCTGATC



**Figure . Gene Sequencing (extract)**



**[ IMPORTANT NOTE ]**

The kit is designed for research use only, we will not be responsible for any issue if the kit was used in clinical diagnostic or any other procedures.