

RPB697Hu01 100µg

Recombinant Alpha-1-Antitrypsin (a1AT)

Organism Species: *Homo sapiens* (Human)

Instruction manual

FOR RESEARCH USE ONLY

NOT FOR USE IN CLINICAL DIAGNOSTIC PROCEDURES

13th Edition (Revised in Aug, 2023)

[PROPERTIES]

Source: Prokaryotic expression

Host: *E.coli*

Residues: Glu25~Lys418

Tags: N-terminal His Tag

Subcellular Location: Secreted, Endoplasmic reticulum lumen

Purity: > 95%

Traits: Freeze-dried powder

Buffer formulation: 20mM Tris, 150mM NaCl, pH8.0, containing 1mM EDTA, 0.01% Sarcosyl, 5% Trehalose .

Original Concentration: 200µg/mL

Applications: Positive Control; Immunogen; SDS-PAGE; WB.

(May be suitable for use in other assays to be determined by the end user.)

Predicted isoelectric point: 5.4

Predicted Molecular Mass: 48.0kDa

Accurate Molecular Mass: 48kDa as determined by SDS-PAGE reducing conditions.

[USAGE]

Reconstitute in 20mM Tris, 150mM NaCl (pH8.0) to a concentration of 0.1-1.0 mg/mL. Do not vortex.

[STORAGE AND STABILITY]

Storage: Avoid repeated freeze/thaw cycles.

Store at 2-8°C for one month.

Aliquot and store at -80°C for 12 months.

Stability Test: The thermal stability is described by the loss rate. The loss rate was determined by accelerated thermal degradation test, that is, incubate the protein at 37°C for 48h, and no obvious degradation and precipitation were observed. The loss rate is less than 5% within the expiration date under appropriate storage condition.

[SEQUENCE]

```
EDPQGD AAQKTDTSHH DQDHPTFNKI
TPNLAEFAPS LYRQLAHQSN STNIFFSPVS IATAFAMLSL GTKADTHDEI
LEGLNPNL TE IPEAQIHEGF QELLRTLNPQ DSQLQLTTGN GLFLSEGLKL
VDKFLEDVKK LYHSEAF TVN FGDTEEAKKQ INDYVEKGTQ GKIVDLVKEL
DRDTV FALVN YIFFK GKWER PFEVKDTEEE DFHVDQVTTV KVPMMKRLGM
FNIQHCKKLS SWVLLMKYLG NATAIFFLPD EGKLQHLENE LTHDIITKFL
ENEDRRSASL HLPKLSITGT YDLKSVLGQL GITKVFSNGA DLSGVTEEAP
LKLSKAVHKA VLTIDEKGTE AAGAMFLEAI PMSIPPEVKF NKPFVFLMIE
QNTKSPLFMG KVVNPTQK
```

[IDENTIFICATION]

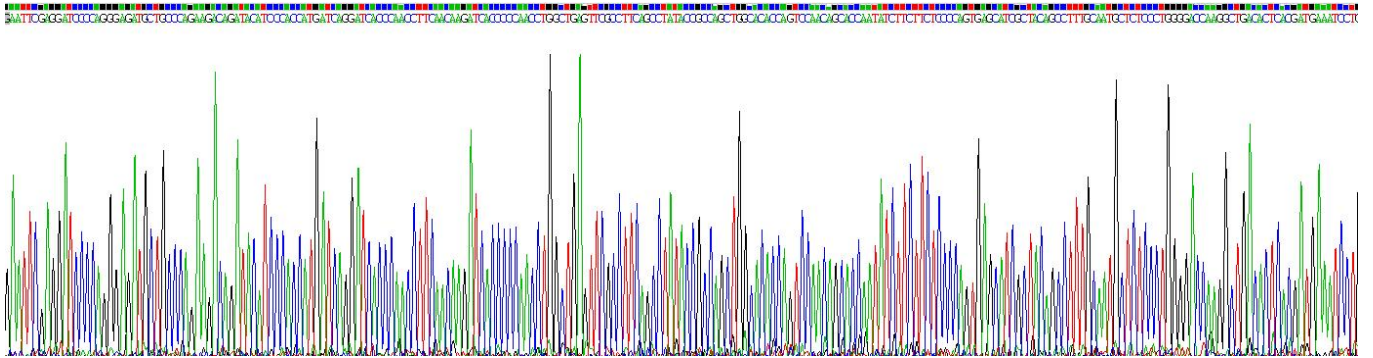


Figure . Gene Sequencing (extract)

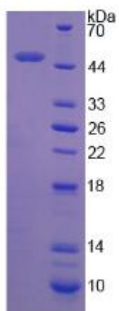


Figure. SDS-PAGE

[IMPORTANT NOTE]

The kit is designed for research use only, we will not be responsible for any issue if the kit was used in clinical diagnostic or any other procedures.