

RPB412Hu01 10µg

Recombinant Adenylate Cyclase 3 (ADCY3)

Organism Species: *Homo sapiens* (Human)

Instruction manual

FOR IN VITRO USE AND RESEARCH USE ONLY
NOT FOR USE IN CLINICAL DIAGNOSTIC PROCEDURES

12th Edition (Revised in Aug, 2016)

[PROPERTIES]

Source: Prokaryotic expression

Host: *E.coli*

Residues: Lys501~Asn736

Tags: N-terminal His Tag

Subcellular Location: Membrane

Purity: > 97%

Traits: Freeze-dried powder

Buffer formulation: 20mM Tris, 150mM NaCl, pH8.0, containing 1mM EDTA, 1mM DTT, 0.01% SKL, 5% Trehalose and Proclin300.

Original Concentration: 200µg/mL

Applications: Positive Control; Immunogen; SDS-PAGE; WB.

(May be suitable for use in other assays to be determined by the end user.)

Predicted isoelectric point: 6.3

Predicted Molecular Mass: 29.9kDa

Accurate Molecular Mass: 30kDa as determined by SDS-PAGE reducing conditions.

[USAGE]

Reconstitute in 20mM Tris, 150mM NaCl (pH8.0) to a concentration of 0.1-1.0 mg/mL. Do not vortex.

[STORAGE AND STABILITY]

Storage: Avoid repeated freeze/thaw cycles.

Store at 2-8°C for one month.

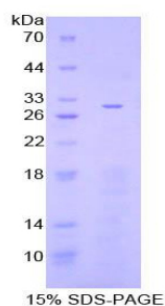
Aliquot and store at -80°C for 12 months.

Stability Test: The thermal stability is described by the loss rate. The loss rate was determined by accelerated thermal degradation test, that is, incubate the protein at 37°C for 48h, and no obvious degradation and precipitation were observed. The loss rate is less than 5% within the expiration date under appropriate storage condition.

[SEQUENCE]

KTATQNLNG SALPNGAPAS SKSSSPALIE TKEPNGSAHS SGSTSEKPEE
QDAQADNPSF PNPRLRLQ DLADRVVDAS EDEHELNQLL NEALLERESA
QVVKRNTFL LSMRFMDPEM ETRYSVEKEK QSGAAFSCSC VLLCTALVE
ILIDPWMTN YVTFMVGEIL LLILTICSLA AIFPRAFPKK LVAFSTWIDR
TRWARNTWAM LAIFILVMAN VVDMLSCLQY YTGPSN

[IDENTIFICATION]



[IMPORTANT NOTE]

The kit is designed for in vitro and research use only, we will not be responsible for any issue if the kit was used in clinical diagnostic or any other procedures.