

FOR IN VITRO AND RESEARCH USE ONLY
 NOT FOR USE IN CLINICAL DIAGNOSTIC PROCEDURES

Results----Rat Model for Acute Lung Injury

Figure 1. Lung figure from model group

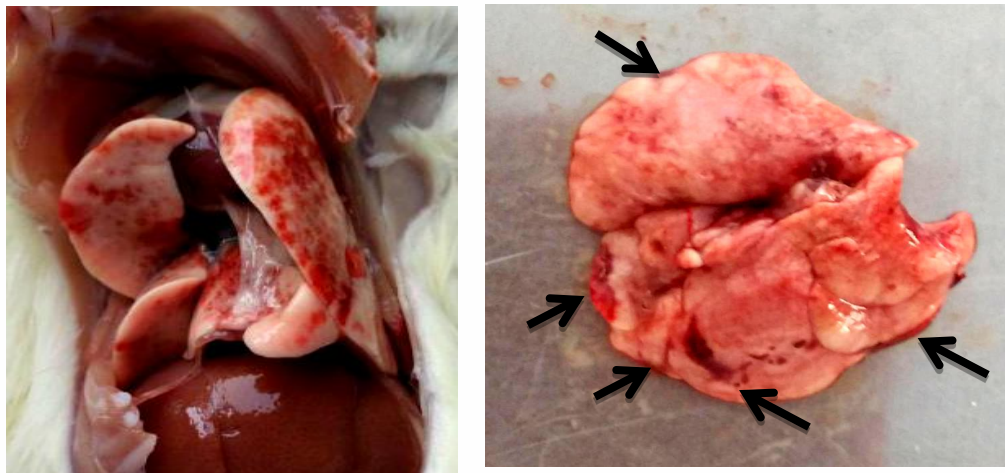


Figure 1 Lung figure from model group, arrows at the lung tissue shows a large area of bleeding and exudation

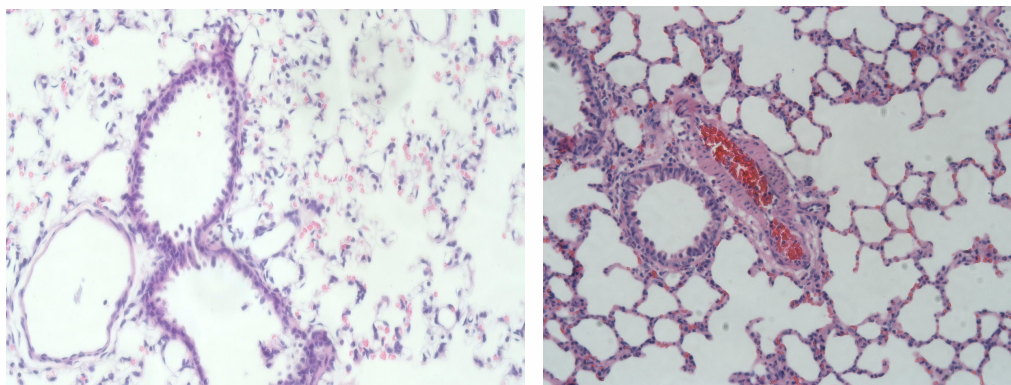
Table 1. Wet / dry mass ratio of lung tissue

Index	Control group	model group
Wet / dry mass ratio of lung tissue	5.26 ± 0.68	4.63 ± 0.86*

Table 1 Wet / dry mass ratio of lung tissue in rats (n=4 (x ± s)

Note: Compare with control group, *P<0.05

Figure 2. HE staining of Lung slice



Life: Control group

Right: Model group



Figure 2 HE staining , the alveolar structure integrity and alveolar wall without obvious edema. No obvious inflammatory cell infiltration in the lung parenchyma, observed in the model group the tracheal lumen has a large number of inflammatory cell infiltration, pulmonary clearance of visible large numbers of neutrophils infiltration and exudation of red blood cell, inflammatory cells significantly.