

PAB792Rb51**Polyclonal Antibody to S100 Calcium Binding Protein A8 (S100A8)****Organism Species: *Oryctolagus cuniculus* (Rabbit)*****Instruction manual***

FOR IN VITRO USE AND RESEARCH USE ONLY

NOT FOR USE IN CLINICAL DIAGNOSTIC PROCEDURES

10th Edition (Revised in Jan, 2014)

[PRODUCT INFORMATION]**Immunogen:** S100A8, Rabbit**Clonality:** Polyclonal**Host:** Cavia**Immunoglobulin Type:** IgG**Purification:** Affinity Chromatography.**Applications:** WB, ICC, IHC-P, IHC-F, ELISA**Concentration:** 200µg/mL**UOM:** 100µg**[IMMUNOGEN INFORMATION]****Immunogen:** Recombinant S100A8 (Met1~Ala89) with two N-terminal Tags, His-tag and T7-tag expressed in *E.coli*.**Accession No.:** RPB792Rb01**[ANTIBODY SPECIFICITY]**

The antibody is a cavia polyclonal antibody raised against S100A8. It has been selected for its ability to recognize S100A8 in immunohistochemical staining and western blotting.

[APPLICATIONS]

Western blotting: 1:50-400

Immunocytochemistry in formalin fixed cells: 1:50-500

Immunohistochemistry in formalin fixed frozen section: 1:50-500

Immunohistochemistry in paraffin section: 1:10-100

Enzyme-linked Immunosorbent Assay: 1:100-5000

Optimal working dilutions must be determined by end user.

[CONTENTS]

Form & Buffer: Supplied as solution form in PBS, pH7.4, containing 0.02% NaN₃, 50% glycerol.

[QUALITY CONTROL]

Content: The quality control contains recombinant S100A8 (Met1~Ala89) disposed in loading buffer.

Usage: 10uL per well when 3,3'-Diaminobenzidine(DAB) as the substrate.
5uL per well when used in enhanced chemiluminescent (ECL).

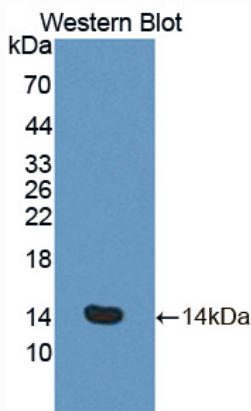
Note: The quality control is specifically manufactured as the positive control. Not used for other purposes.

Loading Buffer: 100mM Tris(pH8.8), 2% SDS, 200mM NaCl, 50% glycerol, BPB 0.01%, NaN₃ 0.02%.

[STORAGE]

Store at 4°C for frequent use. Stored at -20°C in a manual defrost freezer for one year without detectable loss of activity. Avoid repeated freeze-thaw cycles.

[IMAGES]



Used in Western Blot, Sample:

Recombinant S100A8, Rabbit

PAB792Rb51

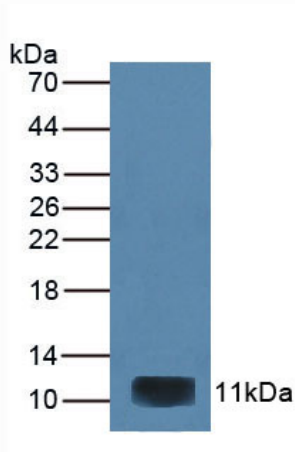
Polyclonal Antibody to S100 Calcium Binding Protein A8 (S100A8)

Organism Species: Oryctolagus cuniculus (Rabbit)

Instruction manual

FOR IN VITRO USE AND RESEARCH USE ONLY

NOT FOR USE IN CLINICAL DIAGNOSTIC PROCEDURES



10th Edition (Revised in Jan, 2014)

Used in Western Blot, Sample: Rabbit Marrow Tissue

Primary Ab: 2µg/mL Cavia Anti-Rabbit S100A8 Ab

Second Ab: 1:1000 Dilution of HRP-Linked Rabbit

Anti-Guinea Ab (Catalog: SECab04)