

PAH326Hu01

Polyclonal Antibody to Protein Phosphatase, Mg²⁺/Mn²⁺ Dependent 1A (PPM1A)**Organism Species: Homo sapiens (Human)*****Instruction manual***

FOR IN VITRO USE AND RESEARCH USE ONLY

NOT FOR USE IN CLINICAL DIAGNOSTIC PROCEDURES

9th Edition (Revised in Jul, 2013)

[PRODUCT INFORMATION]**Immunogen:** PPM1A, Human**Clonality:** Polyclonal**Host:** Rabbit**Immunoglobulin Type:** IgG**Purification:** Affinity Chromatography.**Applications:** WB, ICC, IHC-P, IHC-F, ELISA**Concentration:** 200µg/mL**UOM:** 100µg**[IMMUNOGEN INFORMATION]****Immunogen:** Recombinant PPM1A (Gly2~Try382) expressed in *E.coli*.**Accession No.:** RPH326Hu01**Sequence:** The target protein is fused with two N-terminal Tags, His-tag and T7-tag and its sequence is listed below.

MGSSHHHHHH SSGLVPRGSH MASMTGGQQM GRGS- GAFLDKPKM EKHNAQQGN
GLRYGLSSMQ GWRVEMEDAH TAVIGLPSGL ESWSFFAVYD GHAGSQVAKY CCEHLLDHIT
NNQDFKGSAG APSVENVKNG IRTGFLEIDE HMRVMSEKKH GADRSGSTAV GVLIS PQHTY
FINCGDSRGL LCRNRKVHFF TQDHKPSNPL EKERIQNAGG SVMIQRVNGS LAVSRALGDF
DYKCVHGKGP TEQLVSPEPE VHDIERSEED DQFIILACDG IWDVMGNEEL CDFVRSRLEV
TDDLEKVCNE VVDTCLYKGS RDNMSVILIC FPNAPKVSPE AVKKEAELDK YLECRVEEII
KKQGEVGPLD VHVMRTLASE NIPSLPPGGE LASKRNVIEA VYNRLNPYKN DDTDSTSTDD
MW

[ANTIBODY SPECIFICITY]

The antibody is a rabbit polyclonal antibody raised against PPM1A. It has been selected for its ability to recognize PPM1A in immunohistochemical staining and western blotting.

[APPLICATIONS]

Western blotting: 1:50-400

Immunocytochemistry in formalin fixed cells: 1:50-500

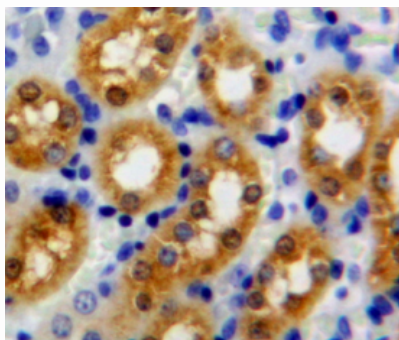
Immunohistochemistry in formalin fixed frozen section: 1:50-500

Immunohistochemistry in paraffin section: 1:10-100

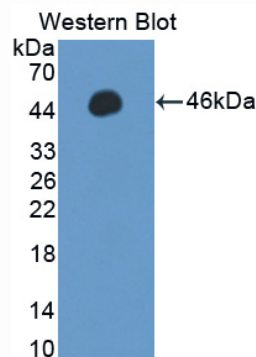
Enzyme-linked Immunosorbent Assay: 1:100-200

Optimal working dilutions must be determined by end user.

[IMAGES]



Used in DAB staining on formalin fixed
paraffin-embedded kidney tissue



Used in Western Blot, Sample:
Recombinant PPM1A, Human

[CONTENTS]

Form & Buffer: Supplied as solution form in PBS, pH7.4, containing 0.02% NaN₃, 50% glycerol.

[QUALITY CONTROL]

Content: The quality control contains recombinant PPM1A (Gly2~Try382) disposed in loading buffer.

Usage: 10uL per well when 3,3'-Diaminobenzidine(DAB) as the substrate.
5uL per well when used in enhanced chemiluminescent (ECL).

Note: The quality control is specifically manufactured as the positive control. Not used for other purposes.

Loading Buffer: 100mM Tris(pH8.8), 2% SDS, 200mM NaCl, 50% glycerol, BPB 0.01%, NaN₃ 0.02%.

[STORAGE]

Store at 4°C for frequent use. Stored at -20°C to -80°C in a manual defrost freezer for one year without detectable loss of activity. Avoid repeated freeze-thaw cycles.