

PAA788Hu01

Polyclonal Antibody to Programmed Cell Death Protein 1 Ligand 1 (PDL1)

Organism Species: *Homo sapiens (Human)*

Instruction manual

FOR RESEARCH USE ONLY

NOT FOR USE IN CLINICAL DIAGNOSTIC PROCEDURES

13th Edition (Revised in Aug, 2023)

[**PROPERTIES**]

Source: Polyclonal antibody preparation

Host: Rabbit

Purification: Antigen-specific affinity chromatography followed by Protein A affinity chromatography

Traits: Liquid

Concentration: 0.5mg/mL

UOM: 100µL

Cross Reactivity: Mouse;Rat;Porcine.

Applications: WB; ICC/IF

[**IMMUNOGEN**]

Immunogen: Recombinant PDL1 (Pro24~Pro234) expressed in *E.coli*

Accession No.: RPA788Hu01

[**APPLICATIONS**]

Western blotting: 0.01-3µg/mL;

Immunocytochemistry: 5-30µg/mL;

Optimal working dilutions must be determined by end user.

[**FORMULATION**]

Form & Buffer: Supplied as solution form in 0.01M PBS, pH7.4, containing 0.05% Proclin-300, 50% glycerol.

[**STORAGE AND STABILITY**]

Storage: Avoid repeated freeze/thaw cycles.

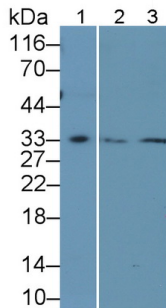
Store at 4°C for frequent use.

Aliquot and store at -20°C for 24 months.

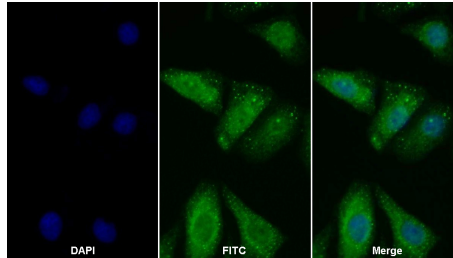
Stability Test: The thermal stability is described by the loss rate. The loss rate was determined by accelerated thermal degradation test, that is, incubate the protein at 37°C for 48h, and no obvious degradation and precipitation were observed. The loss rate is less than 5% within the

expiration date under appropriate storage condition.

[IDENTIFICATION]

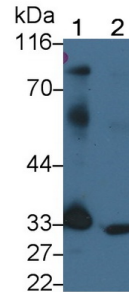


Western Blot; Sample: Lane1: Human Placenta lysate; Lane2: Rat Heart lysate; Lane3: Rat Skeletal muscle lysate Primary Ab: 0.1µg/ml Rabbit Anti-Human PDCD1LG1 Antibody Second Ab: 0.2µg/mL HRP-Linked Caprine Anti-Rabbit IgG Polyclonal Antibody (Catalog: SAA544Rb19) Selected

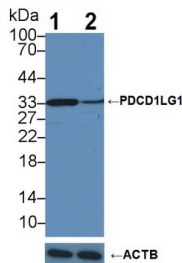


FITC staining on IF; Sample: Human

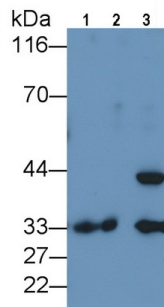
Hela cell; Primary Ab: 20ug/ml Rabbit Anti-Human PDCD1LG1 Antibody Second Ab: 2µg/ml FITC-Linked Caprine Anti-Rabbit IgG Polyclonal Antibody (Catalog: SAA544Rb18)



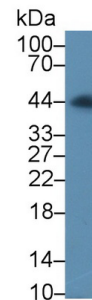
Western Blot; Sample: Lane1: Human Placenta lysate; Lane2: Mouse Heart lysate Primary Ab: 2µg/ml Rabbit Anti-Human PDCD1LG1 Antibody Second Ab: 0.2µg/mL HRP-Linked Caprine Anti-Rabbit IgG Polyclonal Antibody (Catalog: SAA544Rb19) Selected



Knockout Varification:
Lane 1: Wild-type MB231 cell lysate;
Lane 2: PDCD1LG1 knockout MB231 cell lysate;
Predicted MW: 33,20kDa
Observed MW: 33kDa
Primary Ab: 1µg/ml Rabbit Anti-Human PDCD1LG1 Antibody
Second Ab: 0.2µg/mL HRP-Linked Caprine Anti-Rabbit IgG Polyclonal



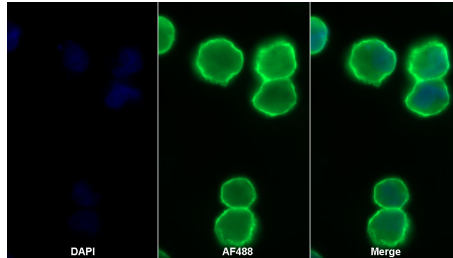
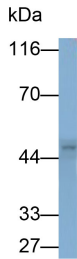
Western Blot; Sample: Lane1: Rat Heart lysate; Lane2: Mouse Heart lysate; Lane3: Porcine Heart lysate Primary Ab: 0.5µg/ml Rabbit Anti-Human PDCD1LG1 Antibody Second Ab: 0.2µg/mL HRP-Linked Caprine Anti-Rabbit IgG Polyclonal Antibody (Catalog: SAA544Rb19) Selected



Western Blot; Sample: Porcine Skeletal muscle lysate;
Primary Ab: 3µg/ml Rabbit Anti-Human PDCD1LG1 Antibody
Second Ab: 0.2µg/mL HRP-Linked Caprine Anti-Rabbit IgG Polyclonal Antibody (Catalog: SAA544Rb19) Selected

Antibody

(Catalog: SAA544Rb19)



AF488 staining on IF;

Sample: 293F cell

Western Blot; Sample: 293F cell lysate

Primary Ab: 0.3µg/ml Rabbit Anti-Human PDCD1LG1 Antibody

Second Ab: 0.2µg/ml HRP-Linked Caprine Anti-Rabbit IgG Polyclonal

Antibody

(Catalog: SAA544Rb19)

Primary Ab: 30µg/ml Rabbit Anti-Human PDCD1LG1 Antibody

Second Ab: 2µg/ml AF488-Linked Caprine Anti-Rabbit IgG Polyclonal

Antibody

(Catalog: SAA544Rb11)

[IMPORTANT NOTE]

The kit is designed for research use only, we will not be responsible for any issue if the kit was used in clinical diagnostic or any other procedures.