

**PAA751Hu01**

**Polyclonal Antibody to Programmed Cell Death Protein 1 (PD1)**

**Organism Species: *Homo sapiens (Human)***

***Instruction manual***

FOR RESEARCH USE ONLY

NOT FOR USE IN CLINICAL DIAGNOSTIC PROCEDURES

---

13th Edition (Revised in Aug, 2023)

**[ PROPERTIES ]**

**Source:** Polyclonal antibody preparation

**Host:** Rabbit

**Purification:** Antigen-specific affinity chromatography followed by Protein A affinity chromatography

**Traits:** Liquid

**Concentration:** 0.5mg/mL

**UOM:** 100µL

**Cross Reactivity:** Rat;Porcine

**Applications:** WB; IHC; ICC/IF

**[ IMMUNOGEN ]**

**Immunogen:** Recombinant PD1 (Leu41~Ala132) expressed in *E.coli*

**Accession No.:** RPA751Hu01

**[ APPLICATIONS ]**

Western blotting: 0.01-5µg/mL;

Immunohistochemistry: 5-20µg/mL;

Immunofluorescence:5-20µg/mL;

Optimal working dilutions must be determined by end user.

**[ FORMULATION ]**

**Form & Buffer:** Supplied as solution form in 0.01M PBS, pH7.4, containing 0.05% Proclin-300, 50% glycerol.

**[ STORAGE AND STABILITY ]**

**Storage:** Avoid repeated freeze/thaw cycles.

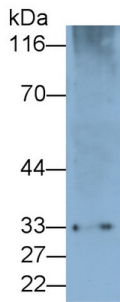
Store at 4°C for frequent use.

Aliquot and store at -20°C for 24 months.

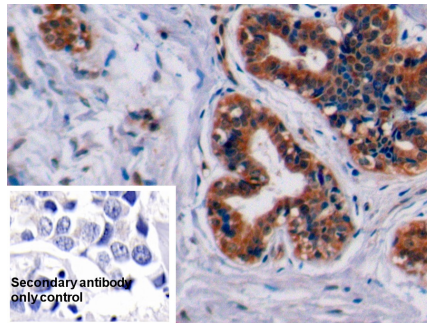
**Stability Test:** The thermal stability is described by the loss rate. The loss rate was determined by accelerated thermal degradation test, that is, incubate the protein at 37°C for 48h, and no

obvious degradation and precipitation were observed. The loss rate is less than 5% within the expiration date under appropriate storage condition.

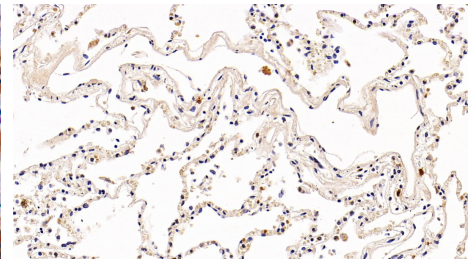
**[ IDENTIFICATION ]**



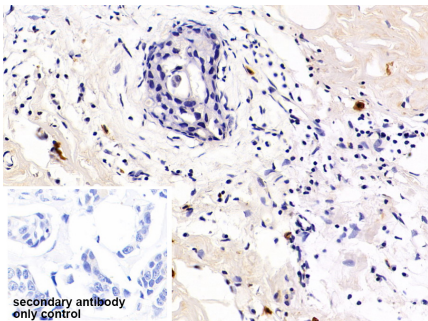
Western Blot; Sample: Rat Spleen lysate Primary Ab: 0.1µg/ml Rabbit Anti-Human PDCD1 Antibody Second Ab: 0.2µg/mL HRP-Linked Caprine Anti-Rabbit IgG Polyclonal Antibody (Catalog: SAA544Rb19) Selected



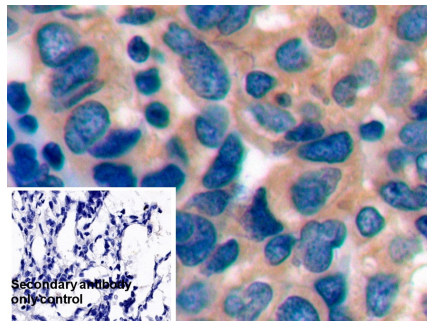
DAB staining on IHC-P; Sample: Human Breast cancer Tissue; Primary Ab: 20ug/ml Rabbit Anti-Human PDCD1 Antibody Second Ab: 2µg/mL HRP-Linked Caprine Anti-Rabbit IgG Polyclonal Antibody (Catalog: SAA544Rb19)



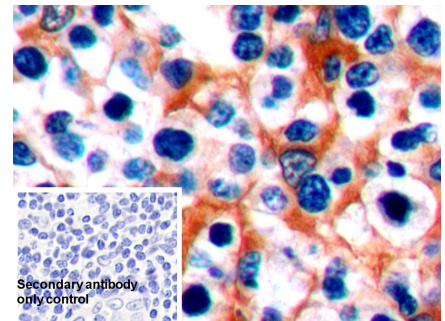
DAB staining on IHC-P; Sample: Human Lung Tissue; Primary Ab: 20ug/ml Rabbit Anti-Human PDCD1 Antibody Second Ab: 2µg/mL HRP-Linked Caprine Anti-Rabbit IgG Polyclonal Antibody (Catalog: SAA544Rb19)



DAB staining on IHC-P; Sample: Human Breast cancer Tissue Primary Ab: 20µg/ml Rabbit Anti-Human PDCD1 Antibody Control: Used PBS instead of primary antibody Second Ab: 2µg/ml HRP-Linked Caprine Anti-Rabbit IgG Polyclonal Antibody (Catalog: SAA544Rb19)



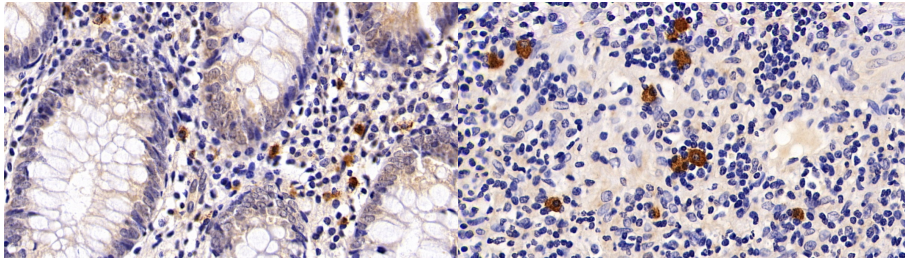
DAB staining on IHC-P; Sample: Human Ovarian cancer Tissue; Primary Ab: 10µg/ml Rabbit Anti-Human PDCD1 Antibody Second Ab: 2µg/mL HRP-Linked Caprine Anti-Rabbit IgG Polyclonal Antibody (Catalog: SAA544Rb19) Secondary antibody only control: Used



DAB staining on IHC-P; Sample: Human Tonsil Tissue; Primary Ab: 10µg/ml Rabbit Anti-Human PDCD1 Antibody Second Ab: 2µg/mL HRP-Linked Caprine Anti-Rabbit IgG Polyclonal Antibody (Catalog: SAA544Rb19) Secondary antibody only control: Used PBS instead of primary antibody,

PBS instead of primary antibody,  
 Second Ab: 2µg/mL HRP-Linked  
 Caprine Anti-Rabbit IgG Polyclonal  
 Antibody  
 (Catalog: SAA544Rb19)

Second Ab: 2µg/mL HRP-Linked  
 Caprine Anti-Rabbit IgG Polyclonal  
 Antibody  
 (Catalog: SAA544Rb19)

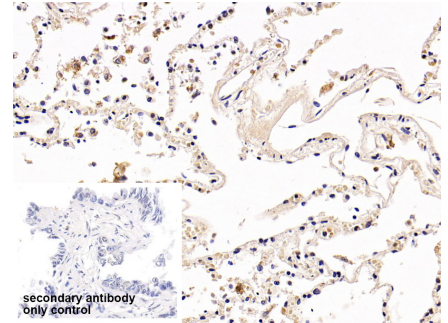


DAB staining on IHC-P;

Sample: Human Appendix Tissue;  
 Primary Ab: 20ug/ml Rabbit Anti-  
 Human PDCD1 Antibody  
 Second Ab: 2µg/mL HRP-Linked  
 Caprine Anti-Rabbit IgG Polyclonal  
 Antibody  
 (Catalog: SAA544Rb19)

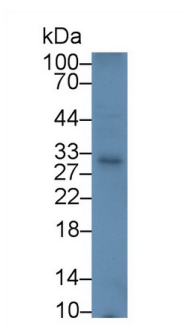
DAB staining on IHC-P;

Sample: Human Kidney Tissue;  
 Primary Ab: 20ug/ml Rabbit Anti-  
 Human PDCD1 Antibody  
 Second Ab: 2µg/mL HRP-Linked  
 Caprine Anti-Rabbit IgG Polyclonal  
 Antibody  
 (Catalog: SAA544Rb19)

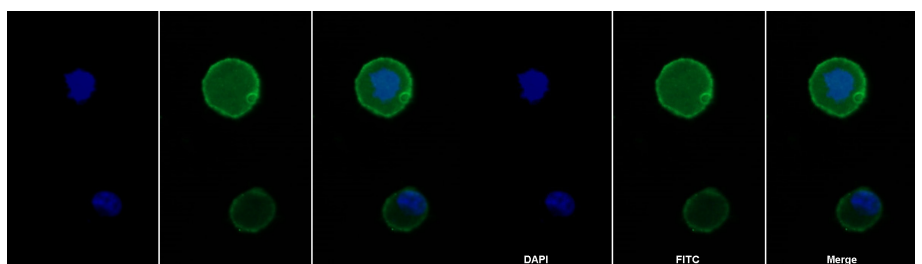


DAB staining on IHC-P;

Sample: Human Lung Tissue  
 Primary Ab: 20µg/ml Rabbit Anti-  
 Human PDCD1 Antibody  
 Control: Used PBS instead of primary  
 antibody  
 Second Ab: 2µg/ml HRP-Linked  
 Caprine Anti-Rabbit IgG Polyclonal  
 Antibody  
 (Catalog: SAA544Rb19)



Western Blot; Sample: Porcine Lymph  
 node lysate;  
 Primary Ab: 5µg/ml Rabbit Anti-Human  
 PDCD1 Antibody  
 Second Ab: 0.2µg/mL HRP-Linked  
 Caprine Anti-Rabbit IgG Polyclonal



FITC staining on IF;

Samples: PDCD1 transfected Human  
 293F cell lysate;  
 Primary Ab: 20µg/ml Mouse Anti-  
 Human PDCD1 Antibody  
 Second Ab: 2µg/ml FITC-Linked  
 Caprine Anti-Mouse IgG Polyclonal

FITC staining on IF;

Sample: 293F cell  
 Primary Ab: 20µg/ml Rabbit Anti-  
 Human PDCD1 Antibody  
 Second Ab: 2µg/ml FITC-Linked  
 Caprine Anti-Rabbit IgG Polyclonal  
 Antibody

Antibody

(Catalog: SAA544Rb19) Selected

Antibody

(Catalog: SAA544Mu18)

(Catalog: SAA544Rb11)

**[ IMPORTANT NOTE ]**

The kit is designed for research use only, we will not be responsible for any issue if the kit was used in clinical diagnostic or any other procedures.