

PAD000Ra01

Polyclonal Antibody to Phenylalanyl tRNA Synthetase 2, Mitochondrial (FARS2)

Organism Species: *Rattus norvegicus* (Rat)

Instruction manual

FOR RESEARCH USE ONLY

NOT FOR USE IN CLINICAL DIAGNOSTIC PROCEDURES

13th Edition (Revised in Aug, 2023)

[PROPERTIES]

Source: Polyclonal antibody preparation

Host: Rabbit

Purification: Antigen-specific affinity chromatography followed by Protein A affinity chromatography

Traits: Liquid

Concentration: 0.5mg/ml

UOM: 100µl

Cross Reactivity: Human.

Applications: WB,IHC,ICC/IF

[IMMUNOGEN]

Immunogen: Recombinant FARS2 (Met1~Phe472) expressed in *E.coli*

Accession No.: RPD000Ra01

[APPLICATIONS]

Western blotting: 0.01-3µg/mL;

Immunohistochemistry: 5-20µg/mL;

Immunofluorescence:5-20µg/mL;

Optimal working dilutions must be determined by end user.

[FORMULATION]

Form & Buffer: Supplied as solution form in 0.01M PBS, pH7.4, containing 0.05% Proclin-300, 50% glycerol.

[STORAGE AND STABILITY]

Storage: Avoid repeated freeze/thaw cycles.

Store at 4°C for frequent use.

Aliquot and store at -20°C for 24 months.

Stability Test: The thermal stability is described by the loss rate. The loss rate was determined by accelerated thermal degradation test, that is, incubate the protein at 37°C for 48h, and no

obvious degradation and precipitation were observed. The loss rate is less than 5% within the expiration date under appropriate storage condition.

[IDENTIFICATION]

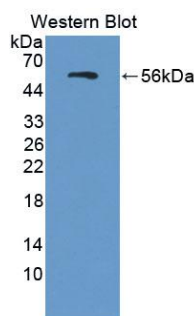
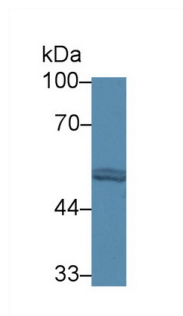
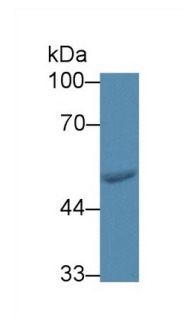


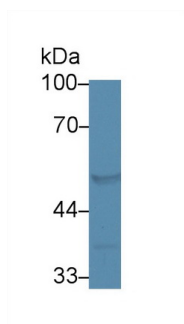
Figure. Western Blot; Sample: Recombinant FARS2, Rat.



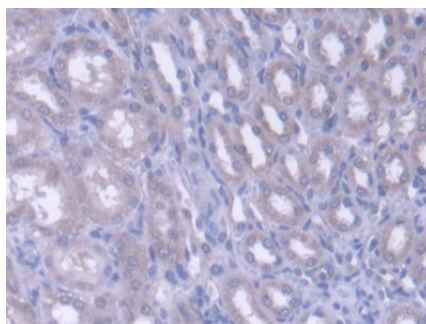
Western Blot; Sample: HepG2 cell lysate;
Primary Ab: 3µg/ml Rabbit Anti-Rat FARS2 Antibody
Second Ab: 0.2µg/mL HRP-Linked Caprine Anti-Rabbit IgG Polyclonal Antibody
(Catalog: SAA544Rb19) Selected



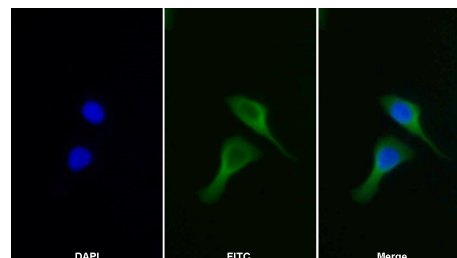
Western Blot; Sample: HeLa cell lysate;
Primary Ab: 3µg/ml Rabbit Anti-Rat FARS2 Antibody
Second Ab: 0.2µg/mL HRP-Linked Caprine Anti-Rabbit IgG Polyclonal Antibody
(Catalog: SAA544Rb19) Selected



Western Blot; Sample: Jurkat cell lysate;
Primary Ab: 3µg/ml Rabbit Anti-Rat FARS2 Antibody
Second Ab: 0.2µg/mL HRP-Linked Caprine Anti-Rabbit IgG Polyclonal Antibody
(Catalog: SAA544Rb19) Selected



DAB staining on IHC-P; Samples: Rat Kidney Tissue; Primary Ab: 20µg/ml Rabbit Anti-Rat FARS2 Antibody
Second Ab: 2µg/mL HRP-Linked Caprine Anti-Rabbit IgG Polyclonal Antibody (Catalog: SAA544Rb19)



FITC staining on IF;
Samples: Human HepG2 cell;
Primary Ab: 20µg/ml Rabbit Anti-Rat FARS2 Antibody
Second Ab: 1.5µg/ml FITC-Linked Caprine Anti-Rabbit IgG Polyclonal Antibody
(Catalog: SAA544Rb18)

[IMPORTANT NOTE]

The kit is designed for research use only, we will not be responsible for any issue if the kit was used in clinical diagnostic or any other procedures.