

PAA098Mu01

Polyclonal Antibody to Matrix Metalloproteinase 10 (MMP10)

Organism Species: *Mus musculus* (Mouse)

Instruction manual

FOR IN VITRO USE AND RESEARCH USE ONLY

NOT FOR USE IN CLINICAL DIAGNOSTIC PROCEDURES

9th Edition (Revised in Jul, 2013)

[PRODUCT INFORMATION]

Immunogen: MMP10, Mouse

Clonality: Polyclonal

Host: Rabbit

Immunoglobulin Type: IgG

Purification: Affinity Chromatography.

Applications: WB, ICC, IHC-P, IHC-F, ELISA

Concentration: 200µg/mL

UOM: 100µg

[IMMUNOGEN INFORMATION]

Immunogen: Recombinant MMP10 (Glu154~Ser472) expressed in *E. coli*.

Accession No.: RPA098Mu01

Sequence: The target protein is fused with two N-terminal Tags, His-tag and T7-tag and its sequence is listed below.

MGSSHHHHHH SSGLVPRGSH MASMTGGQQM GRGSEF- EGEADIM ISFAVGEHGD
FYFDGPGQS LAHAYPPGPG FYGDVHFDDD EKWTLAPSGT NLFLVAAHEL GHSLGLFHSD
KKESLMYPVY RFSTSPANFH LSQDDIEGIQ SLYGAGPSSD ATVVPVLSVS PRPETPKCD
PALSFDSVST LRGEVLFFKD RYFWRRSHWN PEPEFHLISA FWPTLPSDLA AAYEAHNTDS
VLIFKGSQFW AVRGNEVQAG YPKGIHTLGF PPTVKKIDAA VFEKEKKKTY FVGDYKWRP
DETRHVMDKG FPRQITDDFP GIEPQVDAVL HEFGFFYFFR GSSQFEFDPN ARTVTHILKS
NS

[ANTIBODY SPECIFICITY]

The antibody is a rabbit polyclonal antibody raised against MMP10. It has been selected for its ability to recognize MMP10 in immunohistochemical staining and western blotting.

[APPLICATIONS]

Western blotting: 1:50-400

Immunocytochemistry in formalin fixed cells: 1:50-500

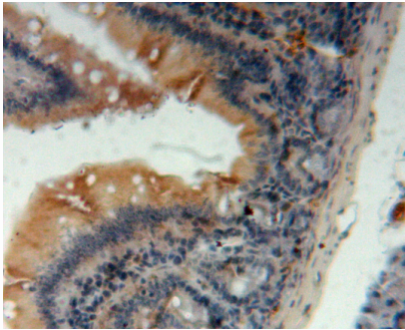
Immunohistochemistry in formalin fixed frozen section: 1:50-500

Immunohistochemistry in paraffin section: 1:10-100

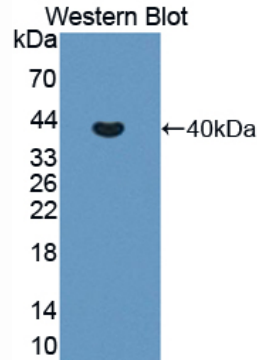
Enzyme-linked Immunosorbent Assay: 1:100-200

Optimal working dilutions must be determined by end user.

[**IMAGES**]



Used in DAB staining on formalin fixed
paraffin-embedded bowels tissue



Used in Western Blot, Sample:
Recombinant MMP10, Mouse

[**CONTENTS**]

Form & Buffer: Supplied as solution form in PBS, pH7.4, containing 0.02% NaN_3 , 50% glycerol.

[**QUALITY CONTROL**]

Content: The quality control contains recombinant MMP10 (Glu154~Ser472) disposed in loading buffer.

Usage: 10uL per well when 3,3'-Diaminobenzidine(DAB) as the substrate.
5uL per well when used in enhanced chemiluminescent (ECL).

Note: The quality control is specifically manufactured as the positive control. Not used for other purposes.

Loading Buffer: 100mM Tris(pH8.8), 2% SDS, 200mM NaCl, 50% glycerol, BPB 0.01%, NaN_3 0.02%.

[**STORAGE**]

Store at 4°C for frequent use. Stored at -20°C to -80°C in a manual defrost freezer for one year without detectable loss of activity. Avoid repeated freeze-thaw cycles.