

PAD225Ra01

Polyclonal Antibody to Lipase A, Lysosomal Acid (LIPA)

Organism Species: Rattus norvegicus (Rat)

Instruction manual

FOR IN VITRO USE AND RESEARCH USE ONLY

NOT FOR USE IN CLINICAL DIAGNOSTIC PROCEDURES

9th Edition (Revised in Jul, 2013)

[PRODUCT INFORMATION]

Immunogen: LIPA, Rat

Clonality: Polyclonal

Host: Rabbit

Immunoglobulin Type: IgG

Purification: Affinity Chromatography.

Applications: WB, ICC, IHC-P, IHC-F, ELISA

Concentration: 200µg/mL

UOM: 100µg

[IMMUNOGEN INFORMATION]

Immunogen: Recombinant LIPA (Asn32~Ile358) expressed in *E.coli*.

Accession No.: RPD225Ra01

Sequence: The target protein is fused with two N-terminal Tags, His-tag and T7-tag and its sequence is listed below.

MGSSHHHHHH SSGLVPRGSH MASMTGGQQM GRGSEF-NMNVTEIIM HWGYPEHSVQ
TGDGYILGVH RIPHGRKNQF DKGPKPVVYL QWRHGFLADS SNWVTNIDNN SLGFILADAG
FDVWMGNSRG NTWSRKHKTL SVSQDEYWAF SFDEMAKYDL PASINYILNK
TGQEQLYNVG HSQGCTIGFI AFSQMPELAK KVKMFFALAP VLSLNFASGP MVKLGRLPDL
LLEDLFGQKQ FLPQSAMVKW LSTHICTHVI MKELCANIFF LICGFNEKNL NMSRVDVYTT
HCPAGTSVQN MVHWTQVVKY HKLQAFDWGS SDKNYFHYNQ SYPPLYSIKD
MQLPTALWSG GKDWLADTSD INILLTEI

[ANTIBODY SPECIFICITY]

The antibody is a rabbit polyclonal antibody raised against LIPA. It has been selected for its ability to recognize LIPA in immunohistochemical staining and western blotting.

[APPLICATIONS]

Western blotting: 1:100-400

Immunocytochemistry in formalin fixed cells: 1:100-500

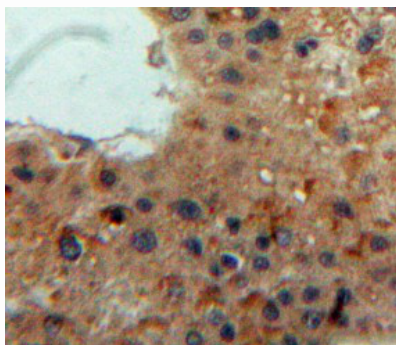
Immunohistochemistry in formalin fixed frozen section: 1:100-500

Immunohistochemistry in paraffin section: 1:50-200

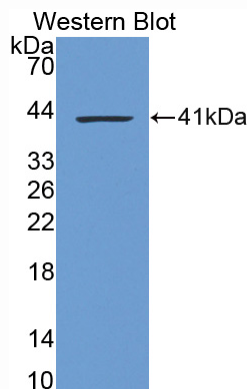
Enzyme-linked Immunosorbent Assay: 1:100-200

Optimal working dilutions must be determined by end user.

[IMAGES]



Used in DAB staining on formalin fixed
paraffin-embedded Liver tissue



Used in Western Blot, Sample:
Recombinant LIPA, Rat

[CONTENTS]

Form & Buffer: Supplied as solution form in PBS, pH7.4, containing 0.02% NaN_3 , 50% glycerol.

[QUALITY CONTROL]

Content: The quality control contains recombinant LIPA (Asn32~Ile358) disposed in loading buffer.

Usage: 10uL per well when 3,3'-Diaminobenzidine(DAB) as the substrate.
5uL per well when used in enhanced chemiluminescent (ECL).

Note: The quality control is specifically manufactured as the positive control. Not used for other purposes.

Loading Buffer: 100mM Tris(pH8.8), 2% SDS, 200mM NaCl, 50% glycerol, BPB 0.01%, NaN_3 0.02%.

[STORAGE]

Store at 4°C for frequent use. Stored at -20°C to -80°C in a manual defrost freezer for one year without detectable loss of activity. Avoid repeated freeze-thaw cycles.