

PAC615Hu01

**Polyclonal Antibody to Induced Myeloid Leukemia Cell Differentiation Protein Mcl-1
(MCL1)**

Organism Species: *Homo sapiens (Human)*

Instruction manual

FOR RESEARCH USE ONLY

NOT FOR USE IN CLINICAL DIAGNOSTIC PROCEDURES

13th Edition (Revised in Aug, 2023)

[PROPERTIES]

Source: Polyclonal antibody preparation

Host: Rabbit

Purification: Antigen-specific affinity chromatography followed by Protein A affinity chromatography

Traits: Liquid

Concentration: 0.5mg/ml

UOM: 100µl

Cross Reactivity: N/A

Applications: WB; IHC; ICC; IP.

[IMMUNOGEN]

Immunogen: Recombinant MCL1 (Arg6~Ile328) expressed in *E.coli*

Accession No.: RPC615Hu01

[APPLICATIONS]

Western blotting: 0.01-2µg/mL;

Immunohistochemistry: 5-20µg/mL;

Immunocytochemistry: 5-20µg/mL;

Optimal working dilutions must be determined by end user.

[FORMULATION]

Form & Buffer: Supplied as solution form in PBS, pH7.4, containing 0.02% NaN₃, 50% glycerol.

[STORAGE AND STABILITY]

Storage: Avoid repeated freeze/thaw cycles.

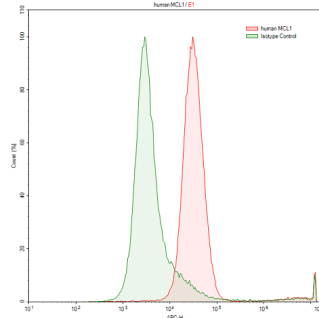
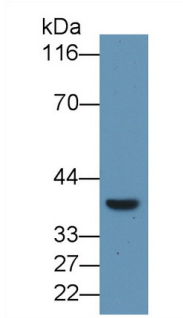
Store at 4°C for frequent use.

Aliquot and store at -20°C for 24 months.

Stability Test: The thermal stability is described by the loss rate. The loss rate was determined by accelerated thermal degradation test, that is, incubate the protein at 37°C for 48h, and no

obvious degradation and precipitation were observed. The loss rate is less than 5% within the expiration date under appropriate storage condition.

[IDENTIFICATION]



Western Blot; Sample: Raji cell lysate Raji human Burkitt's lymphoma cell line
 Primary Ab: 1ug/ml Rabbit Anti-Human was stained with rabbit Anti-human
 MCL1 Antibody Second Ab: 0.2µg/mL MCL1 Polyclonal Antibody (Catalog #
 HRP-Linked Caprine Anti-Rabbit IgG PAC615Hu01), filled red histogram) or
 Polyclonal Antibody (Catalog: Isotype control antibody (Catalog #
 SAA544Rb19) IS067-Rb01, filled green histogram),
 followed by APC-conjugated Anti-rabbit
 IgG Secondary Antibody (Catalog #
 SAA544Rb15). Cells were fixed with
 4% paraformaldehyde and
 permeabilized with 0.1% Triton X-100.

[IMPORTANT NOTE]

The kit is designed for research use only, we will not be responsible for any issue if the kit was used in clinical diagnostic or any other procedures.