

PAA659Ra01

Polyclonal Antibody to Glutathione S Transferase A4 (GSTA4)

Organism Species: *Rattus norvegicus* (Rat)

Instruction manual

FOR RESEARCH USE ONLY

NOT FOR USE IN CLINICAL DIAGNOSTIC PROCEDURES

13th Edition (Revised in Aug, 2023)

[PROPERTIES]

Source: Polyclonal antibody preparation

Host: Rabbit

Purification: Antigen-specific affinity chromatography followed by Protein A affinity chromatography

Traits: Liquid

Concentration: 500µg/mL

UOM: 1

Cross Reactivity: N/A

Applications: WB,IHC

[IMMUNOGEN]

Immunogen: Recombinant GSTA4 (Glu2~Phe222 (Accession # P14942)) expressed in *E.coli*

Accession No.: RPA659Ra01

[APPLICATIONS]

Western blotting: 0.01-5µg/mL

Immunohistochemistry: 5-20µg/mL

Immunocytochemistry: 5-20µg/mL

Optimal working dilutions must be determined by end user.

[FORMULATION]

Form & Buffer: Supplied as solution form in 0.01M PBS, pH7.4, containing 0.05% Proclin-300, 50% glycerol.

[STORAGE AND STABILITY]

Storage: Avoid repeated freeze/thaw cycles.

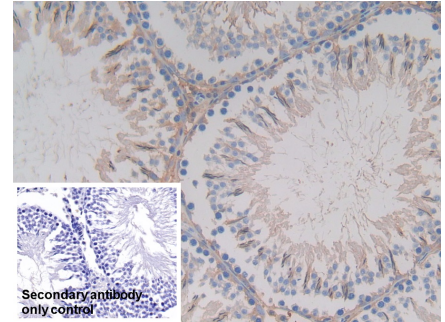
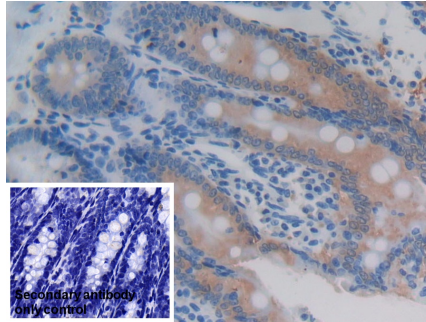
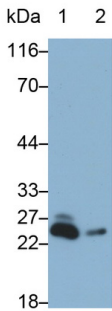
Store at 4°C for frequent use.

Aliquot and store at -20°C for 24 months.

Stability Test: The thermal stability is described by the loss rate. The loss rate was determined by accelerated thermal degradation test, that is, incubate the protein at 37°C for 48h, and no

obvious degradation and precipitation were observed. The loss rate is less than 5% within the expiration date under appropriate storage condition.

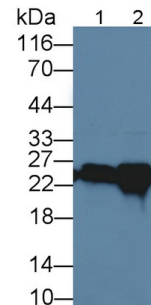
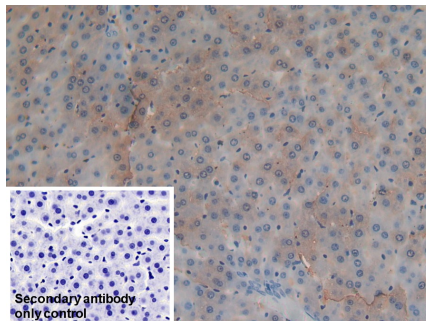
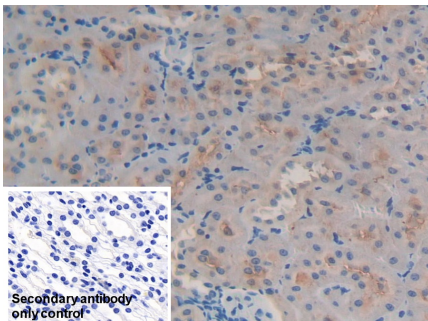
[IDENTIFICATION]



Western Blot; Sample: Lane1: Rat Liver lysate; Lane2: Rat Lung lysate Primary Ab: 0.2µg/ml Rabbit Anti-Rat GSTA4 Antibody Second Ab: 0.2µg/mL HRP-Linked Caprine Anti-Rabbit IgG Polyclonal Antibody (Catalog: SAA544Rb19) Selected

DAB staining on IHC-P; Sample: Rat Colon Tissue; Primary Ab: 20µg/ml Rabbit Anti-Rat GSTa4 Antibody Second Ab: 2µg/mL HRP-Linked Caprine Anti-Rabbit IgG Polyclonal Antibody (Catalog: SAA544Rb19) Secondary antibody only control: Used PBS instead of primary antibody, Second Ab: 2µg/mL HRP-Linked Capr

DAB staining on IHC-P; Sample: Rat Testis Tissue; Primary Ab: 20µg/ml Rabbit Anti-Rat GSTa4 Antibody Second Ab: 2µg/mL HRP-Linked Caprine Anti-Rabbit IgG Polyclonal Antibody (Catalog: SAA544Rb19) Secondary antibody only control: Used PBS instead of primary antibody, Second Ab: 2µg/mL HRP-Linked Caprine Anti-Rabbit IgG Polyclonal Antibody (Catalog: SAA544Rb19)



DAB staining on IHC-P; Sample: Rat Kidney Tissue; Primary Ab: 20µg/ml Rabbit Anti-Rat

DAB staining on IHC-P; Sample: Rat Liver Tissue; Primary Ab: 20µg/ml Rabbit Anti-Rat

Western Blot; Sample: Lane1: Rat Cerebrum lysate; Lane2: Rat Liver lysate

GSTa4 Antibody	GSTa4 Antibody	Primary Ab: 5µg/ml Rabbit Anti-Rat
Second Ab: 2µg/mL HRP-Linked	Second Ab: 2µg/mL HRP-Linked	GSTA4 Antibody
Caprine Anti-Rabbit IgG Polyclonal	Caprine Anti-Rabbit IgG Polyclonal	Second Ab: 0.2µg/mL HRP-Linked
Antibody	Antibody	Caprine Anti-Rabbit IgG Polyclonal
(Catalog: SAA544Rb19)	(Catalog: SAA544Rb19)	Antibody
Secondary antibody only control: Used	Secondary antibody only control: Used	(Catalog: SAA544Rb19) Selected
PBS instead of primary antibody,	PBS instead of primary antibody,	
Second Ab: 2µg/mL HRP-Linked	Second Ab: 2µg/mL HRP-Linked	
Caprine Anti-Rabbit IgG Polyclonal	Caprine Anti-Rabbit IgG Polyclonal	
Antibody	Antibody	
(Catalog: SAA544Rb19)	(Catalog: SAA544Rb19)	

[IMPORTANT NOTE]

The kit is designed for research use only, we will not be responsible for any issue if the kit was used in clinical diagnostic or any other procedures.