

**PAA277Ra01**

**Polyclonal Antibody to Connexin 43 (CX43)**

**Organism Species: *Rattus norvegicus* (Rat)**

***Instruction manual***

FOR RESEARCH USE ONLY

NOT FOR USE IN CLINICAL DIAGNOSTIC PROCEDURES

---

13th Edition (Revised in Aug, 2023)

### **[ PROPERTIES ]**

**Source:** Polyclonal antibody preparation

**Host:** Rabbit

**Purification:** Antigen-specific affinity chromatography followed by Protein A affinity chromatography

**Traits:** Liquid

**Concentration:** 0.5mg/ml

**UOM:** 50µl

**Cross Reactivity:** Human;Mouse

**Applications:** WB; IHC; ICC; IP.

### **[ IMMUNOGEN ]**

**Immunogen:** Recombinant CX43 (Ser180~Ile382) expressed in *E.coli*

**Accession No.:** RPA277Ra01

### **[ APPLICATIONS ]**

Western blotting: 0.01-3µg/mL;

Immunohistochemistry: 5-20µg/mL;

Immunocytochemistry: 5-20µg/mL;

Optimal working dilutions must be determined by end user.

### **[ FORMULATION ]**

**Form & Buffer:** Supplied as solution form in 0.01M PBS, pH7.4, containing 0.05% Proclin-300, 50% glycerol.

### **[ STORAGE AND STABILITY ]**

**Storage:** Avoid repeated freeze/thaw cycles.

Store at 4°C for frequent use.

Aliquot and store at -20°C for 24 months.

**Stability Test:** The thermal stability is described by the loss rate. The loss rate was determined by accelerated thermal degradation test, that is, incubate the protein at 37°C for 48h, and no

obvious degradation and precipitation were observed. The loss rate is less than 5% within the expiration date under appropriate storage condition.

**[ IDENTIFICATION ]**

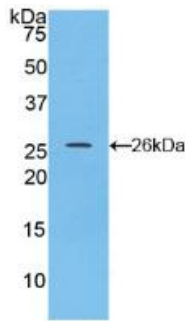
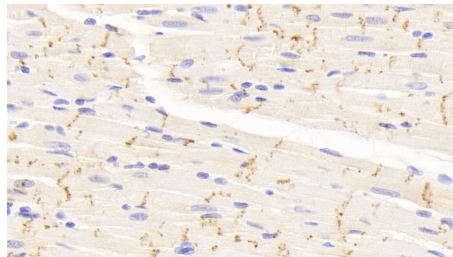
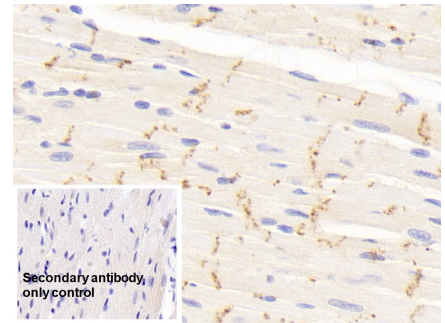


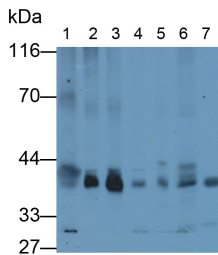
Figure. Western Blot; Sample: Recombinant CX43, Rat.



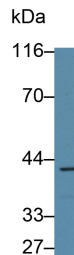
DAB staining on IHC-P; Samples: Rat Cardiac Muscle Tissue; Primary Ab: 10<sup>2</sup>g/ml Rabbit Anti-Rat CX43 Antibody  
Second Ab: 2 $\mu$ g/ml HRP-Linked Caprine Anti-Rabbit IgG Polyclonal Antibody (Catalog: SAA544Rb19)



DAB staining on IHC-P; Sample: Rat Cardiac Muscle Tissue  
Primary Ab: 10 $\mu$ g/ml Rabbit Anti-Rat CX43 Antibody  
Control: Used PBS instead of primary antibody  
Second Ab: 2 $\mu$ g/ml HRP-Linked Caprine Anti-Rabbit IgG Polyclonal Antibody (Catalog: SAA544Rb19)



Western Blot; Samples: Lane1: Rat Heart lysate; Lane2: Rat Cerebrum lysate; Lane3: Rat Cerebellum lysate; Lane4: Mouse Cerebrum lysate; Lane5: Mouse Cerebellum lysate; Lane6: U87MG cell lysate; Lane7: SK-N-SH cell lysate;



Western Blot; Sample: HeLa cell lysate  
Primary Ab: 1 $\mu$ g/ml Rabbit Anti-Rat CX43 Antibody  
Second Ab: 0.2<sup>2</sup>g/ml HRP-Linked Caprine Anti-Rabbit IgG Polyclonal Antibody (Catalog: SAA544Rb19)

Primary Ab: 3µg/ml Rabbit Anti-Rat

CX43 Antibody

Second Ab: 0.2?g/ml HRP-Linked

Caprine Anti-Rabbit IgG Polyclonal

Antibody

(Catalog: SAA544Rb19)

**[ IMPORTANT NOTE ]**

The kit is designed for research use only, we will not be responsible for any issue if the kit was used in clinical diagnostic or any other procedures.