

**PAC387Hu01**

**Polyclonal Antibody to Charcot Leyden Crystal Protein (CLC)**

**Organism Species: *Homo sapiens* (Human)**

***Instruction manual***

FOR RESEARCH USE ONLY

NOT FOR USE IN CLINICAL DIAGNOSTIC PROCEDURES

---

13th Edition (Revised in Aug, 2023)

### **[ PROPERTIES ]**

**Source:** Polyclonal antibody preparation

**Host:** Rabbit

**Purification:** Antigen-specific affinity chromatography followed by Protein A affinity chromatography

**Traits:** Liquid

**Concentration:** 0.36mg/mL

**UOM:** 100µL

**Cross Reactivity:** Mouse

**Applications:** WB; ICC/IF

### **[ IMMUNOGEN ]**

**Immunogen:** Recombinant CLC (Ser2~Arg142) expressed in *E.coli*

**Accession No.:** RPC387Hu01

### **[ APPLICATIONS ]**

Western blotting: 0.01-3µg/mL;

Immunocytochemistry: 5-30µg/mL;

Optimal working dilutions must be determined by end user.

### **[ FORMULATION ]**

**Form & Buffer:** Supplied as solution form in 0.01M PBS, pH7.4, containing 0.05% Proclin-300, 50% glycerol.

### **[ STORAGE AND STABILITY ]**

**Storage:** Avoid repeated freeze/thaw cycles.

Store at 4°C for frequent use.

Aliquot and store at -20°C for 24 months.

**Stability Test:** The thermal stability is described by the loss rate. The loss rate was determined by accelerated thermal degradation test, that is, incubate the protein at 37°C for 48h, and no obvious degradation and precipitation were observed. The loss rate is less than 5% within the

expiration date under appropriate storage condition.

**[ IDENTIFICATION ]**

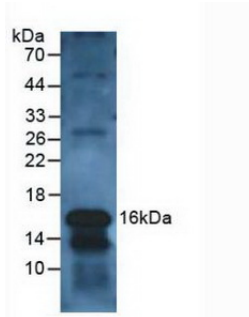
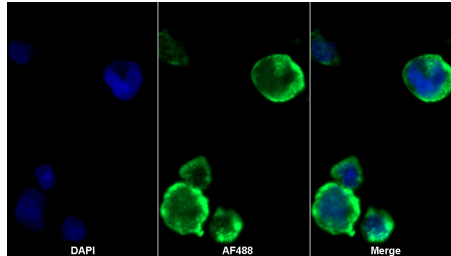


Figure. Western Blot;

Sample: Human Leukocyte Cells.



AF488 staining on IF;

Sample: THP1 cell

Primary Ab: 20µg/ml Rabbit Anti-  
Human CLC Antibody

Second Ab: 2µg/ml AF488-Linked  
Caprine Anti-Rabbit IgG Polyclonal  
Antibody

(Catalog: SAA544Rb11)

**[ IMPORTANT NOTE ]**

The kit is designed for research use only, we will not be responsible for any issue if the kit was used in clinical diagnostic or any other procedures.