

**PAA214Ra01**

**Polyclonal Antibody to Caveolin 1 (CAV1)**

**Organism Species: *Rattus norvegicus* (Rat)**

***Instruction manual***

FOR RESEARCH USE ONLY

NOT FOR USE IN CLINICAL DIAGNOSTIC PROCEDURES

---

13th Edition (Revised in Aug, 2023)

### **[ PROPERTIES ]**

**Source:** Polyclonal antibody preparation

**Host:** Rabbit

**Purification:** Antigen-specific affinity chromatography followed by Protein A affinity chromatography

**Traits:** Liquid

**Concentration:** 0.5mg/ml

**UOM:** 100µl

**Cross Reactivity:** Human;Mouse

**Applications:** WB; IHC; ICC; IP.

### **[ IMMUNOGEN ]**

**Immunogen:** Recombinant CAV1 (Ser2~Thr105) expressed in *E.coli*

**Accession No.:** RPA214Ra01

### **[ APPLICATIONS ]**

Western blotting: 0.01-2µg/mL;

Immunohistochemistry: 5-20µg/mL;

Immunocytochemistry: 5-20µg/mL;

Optimal working dilutions must be determined by end user.

### **[ FORMULATION ]**

**Form & Buffer:** Supplied as solution form in PBS, pH7.4, containing 0.02% NaN<sub>3</sub>, 50% glycerol.

### **[ STORAGE AND STABILITY ]**

**Storage:** Avoid repeated freeze/thaw cycles.

Store at 4°C for frequent use.

Aliquot and store at -20°C for 24 months.

**Stability Test:** The thermal stability is described by the loss rate. The loss rate was determined by accelerated thermal degradation test, that is, incubate the protein at 37°C for 48h, and no

obvious degradation and precipitation were observed. The loss rate is less than 5% within the expiration date under appropriate storage condition.

**[ IDENTIFICATION ]**

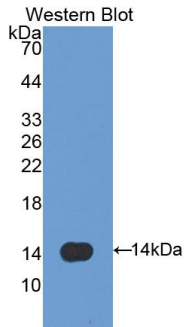
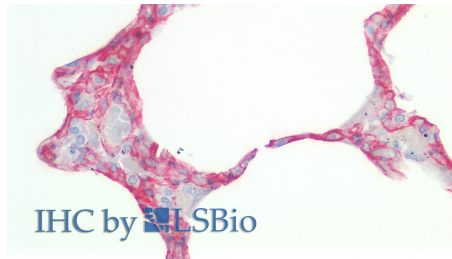
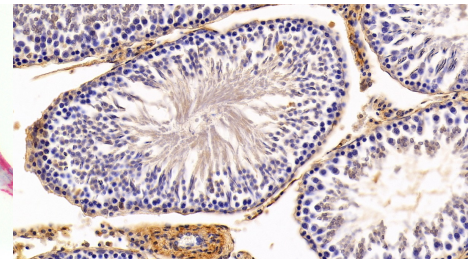


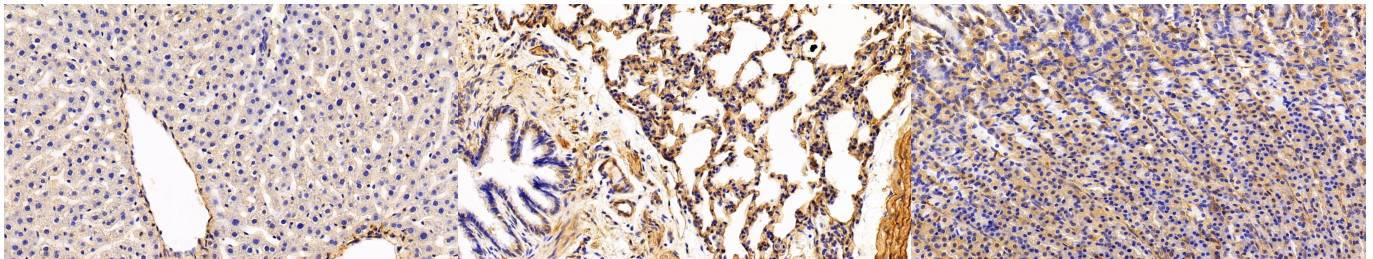
Figure. Western Blot; Sample:  
Recombinant CAV1, Rat.



Vector Red staining on IHC-P;  
Samples: Human Lung Tissue;  
Primary Ab: Rabbit Anti-Rat CAV1  
Antibody (Dilution ratio 1:100)  
Second Ab: 2µg/mL HRP-Linked  
Caprine Anti-Rabbit IgG Polyclonal  
Antibody



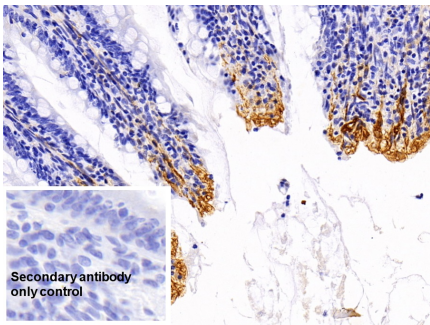
DAB staining on IHC-P;  
Sample: Rat Testis Tissue;  
Primary Ab: 20µg/ml Rabbit Anti-Rat  
CAV1 Antibody  
Second Ab: 2µg/mL HRP-Linked  
Caprine Anti-Rabbit IgG Polyclonal  
Antibody  
(Catalog: SAA544Rb19)



DAB staining on IHC-P;  
Sample: Rat Liver Tissue;  
Primary Ab: 20µg/ml Rabbit Anti-Rat  
CAV1 Antibody  
Second Ab: 2µg/mL HRP-Linked  
Caprine Anti-Rabbit IgG Polyclonal  
Antibody  
(Catalog: SAA544Rb19)

DAB staining on IHC-P;  
Sample: Rat Lung Tissue;  
Primary Ab: 20µg/ml Rabbit Anti-Rat  
CAV1 Antibody  
Second Ab: 2µg/mL HRP-Linked  
Caprine Anti-Rabbit IgG Polyclonal  
Antibody  
(Catalog: SAA544Rb19)

DAB staining on IHC-P;  
Sample: Rat Stomach Tissue;  
Primary Ab: 20µg/ml Rabbit Anti-Rat  
CAV1 Antibody  
Second Ab: 2µg/mL HRP-Linked  
Caprine Anti-Rabbit IgG Polyclonal  
Antibody  
(Catalog: SAA544Rb19)



DAB staining on IHC-P;

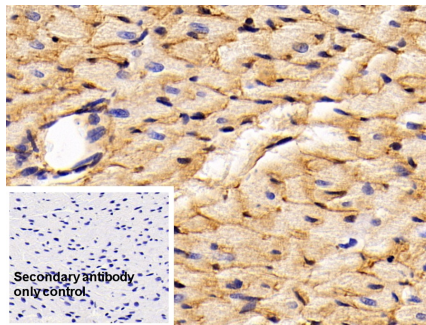
Sample: Rat Colon Tissue

Primary Ab: 20µg/ml Rabbit Anti-Rat  
CAV1 Antibody

Control: Used PBS instead of primary  
antibody

Second Ab: 2µg/ml HRP-Linked  
Caprine Anti-Rabbit IgG Polyclonal  
Antibody

(Catalog: SAA544Rb19)



DAB staining on IHC-P;

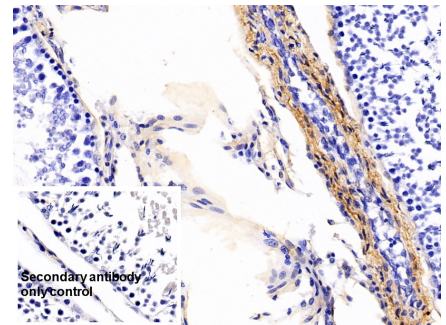
Sample: Rat Cardiac Muscle Tissue

Primary Ab: 20µg/ml Rabbit Anti-Rat  
CAV1 Antibody

Control: Used PBS instead of primary  
antibody

Second Ab: 2µg/ml HRP-Linked  
Caprine Anti-Rabbit IgG Polyclonal  
Antibody

(Catalog: SAA544Rb19)



DAB staining on IHC-P;

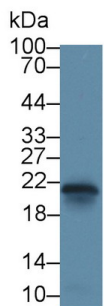
Sample: Rat Testis Tissue

Primary Ab: 20µg/ml Rabbit Anti-Rat  
CAV1 Antibody

Control: Used PBS instead of primary  
antibody

Second Ab: 2µg/ml HRP-Linked  
Caprine Anti-Rabbit IgG Polyclonal  
Antibody

(Catalog: SAA544Rb19)



Western Blot; Sample: Rat Heart lysate;

Primary Ab: 2µg/ml Rabbit Anti-Rat  
CAV1 Antibody

Second Ab: 0.2µg/mL HRP-Linked  
Caprine Anti-Rabbit IgG Polyclonal  
Antibody

(Catalog: SAA544Rb19)

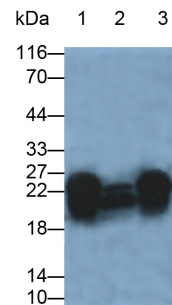


Western Blot; Sample: Mouse Heart  
lysate;

Primary Ab: 2µg/ml Rabbit Anti-Rat  
CAV1 Antibody

Second Ab: 0.2µg/mL HRP-Linked  
Caprine Anti-Rabbit IgG Polyclonal  
Antibody

(Catalog: SAA544Rb19)



Western Blot; Samples: Lane1: Rat  
Heart lysate; Lane2: Rat Spleen lysate;

Lane3: Mouse Heart lysate;  
Primary Ab: 0.2µg/ml Rabbit Anti-Rat  
CAV1 Antibody

Second Ab: 0.2µg/ml HRP-Linked  
Caprine Anti-Rabbit IgG Polyclonal  
Antibody

(Catalog: SAA544Rb19)

**[ IMPORTANT NOTE ]**

The kit is designed for research use only, we will not be responsible for any issue if the kit was used in clinical diagnostic or any other procedures.