

PAA626Hu02

Polyclonal Antibody to Caspase 3 (CASP3)

Organism Species: *Homo sapiens* (Human)

Instruction manual

FOR RESEARCH USE ONLY

NOT FOR USE IN CLINICAL DIAGNOSTIC PROCEDURES

13th Edition (Revised in Aug, 2023)

[**PROPERTIES**]

Source: Polyclonal antibody preparation

Host: Rabbit

Purification: Antigen-specific affinity chromatography followed by Protein A affinity chromatography

Traits: Liquid

Concentration: 0.5mg/mL

UOM: 100µL

Cross Reactivity: Rat;Porcine

Applications: WB; IHC

[**IMMUNOGEN**]

Immunogen: Recombinant CASP3 (Ser29~Asp175) expressed in *E.coli*

Accession No.: RPA626Hu02

[**APPLICATIONS**]

Western blotting: 0.01-2µg/mL;

Immunohistochemistry: 5-20µg/mL;

Immunocytochemistry: 5-20µg/mL;

Optimal working dilutions must be determined by end user.

[**FORMULATION**]

Form & Buffer: Supplied as solution form in 0.01M PBS, pH7.4, containing 0.05% Proclin-300, 50% glycerol.

[**STORAGE AND STABILITY**]

Storage: Avoid repeated freeze/thaw cycles.

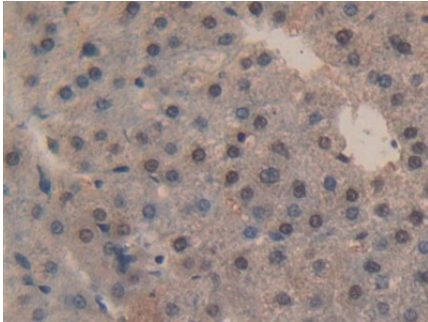
Store at 4°C for frequent use.

Aliquot and store at -20°C for 24 months.

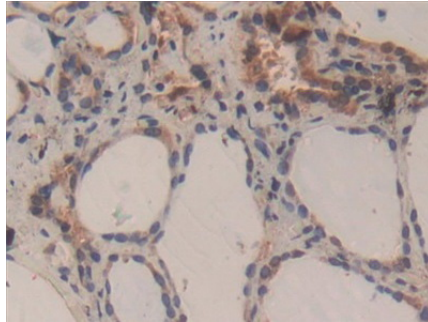
Stability Test: The thermal stability is described by the loss rate. The loss rate was determined by accelerated thermal degradation test, that is, incubate the protein at 37°C for 48h, and no

obvious degradation and precipitation were observed. The loss rate is less than 5% within the expiration date under appropriate storage condition.

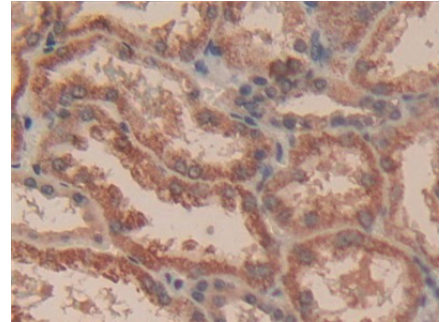
[IDENTIFICATION]



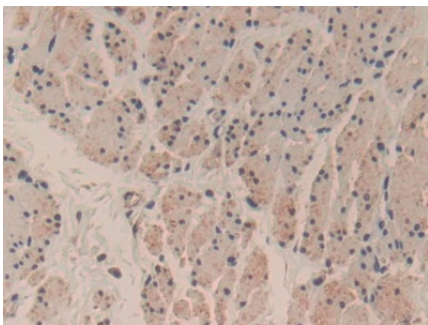
DAB staining on IHC-P; Samples: Human Liver Tissue; Primary Ab: 20µg/ml Rabbit Anti-Human CASP3 Antibody Second Ab: 2µg/mL HRP-Linked Caprine Anti-Rabbit IgG Polyclonal Antibody (Catalog: SAA544Rb19)



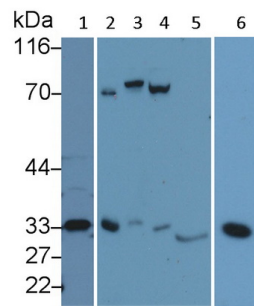
DAB staining on IHC-P; Samples: Human Thyroid Tissue; Primary Ab: 20µg/ml Rabbit Anti-Human CASP3 Antibody Second Ab: 2µg/mL HRP-Linked Caprine Anti-Rabbit IgG Polyclonal Antibody (Catalog: SAA544Rb19)



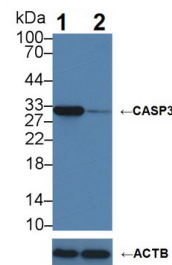
DAB staining on IHC-P; Samples: Human Kidney Tissue; Primary Ab: 20µg/ml Rabbit Anti-Human CASP3 Antibody Second Ab: 2µg/mL HRP-Linked Caprine Anti-Rabbit IgG Polyclonal Antibody (Catalog: SAA544Rb19)



DAB staining on IHC-P; Samples: Human Esophagus cancer Tissue; Primary Ab: 20µg/ml Rabbit Anti-Human CASP3 Antibody Second Ab: 2µg/mL HRP-Linked Caprine Anti-Rabbit IgG Polyclonal Antibody (Catalog: SAA544Rb19)



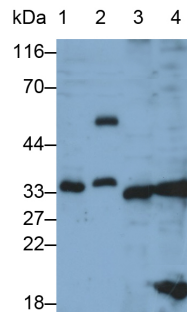
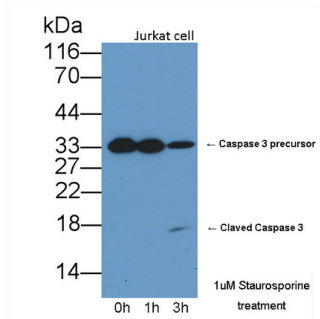
Western Blot; Sample: Lane1: Human Liver lysate; Lane2: Jurkat cell lysate; Lane3: Hela cell lysate; Lane4: HepG2 cell lysate; Lane5: Porcine Liver lysate; Lane6: Rat Cerebrum lysate Primary Ab: 0.5µg/ml Rabbit Anti-Human CASP3 Antibody Second Ab: 0.2µg/mL HRP-Linked Caprine Anti-Rabbit IgG Polyclonal



Knockout Varification: Lane 1: Wild-type Jurkat cell lysate; Lane 2: CASP3 knockout Jurkat cell lysate; Predicted MW: 31kDa Observed MW: 31kDa Primary Ab: 5µg/ml Rabbit Anti-Human CASP3 Antibody Second Ab: 0.2µg/mL HRP-Linked

Antibody
(Catalog: SAA544Rb19)

Caprine Anti-Rabbit IgG Polyclonal
Antibody
(Catalog: SAA544Rb19)



Western blot shows lysates of Jurkat cell line treated with 1 μ M staurosporine (STS) for the indicated times. Western Blot; Samples: Lane1: Jurkat cell lysate; Lane2: Human peripheral blood mononuclear cell; Lane3: Porcine Liver lysate; Lane4: Rat Cerebrum lysate;

Primary Ab: 0.5ug/ml Rabbit Anti-Human CASP3 Antibody
Primary Ab: 0.2 μ g/ml Rabbit Anti-Human CASP3 Antibody

Second Ab: 0.2 μ g/mL HRP-Linked Caprine Anti-Rabbit IgG Polyclonal Antibody (Catalog: SAA544Rb19)
Second Ab: 0.2 μ g/ml HRP-Linked Caprine Anti-Rabbit IgG Polyclonal Antibody (Catalog: SAA544Rb19)

[IMPORTANT NOTE]

The kit is designed for research use only, we will not be responsible for any issue if the kit was used in clinical diagnostic or any other procedures.