

PAC382Mu01

Polyclonal Antibody to Cartilage Intermediate Layer Protein (CILP)

Organism Species: *Mus musculus* (Mouse)

Instruction manual

FOR IN VITRO USE AND RESEARCH USE ONLY

NOT FOR USE IN CLINICAL DIAGNOSTIC PROCEDURES

9th Edition (Revised in Jul, 2013)

[PRODUCT INFORMATION]

Immunogen: CILP, Mouse

Clonality: Polyclonal

Host: Rabbit

Immunoglobulin Type: IgG

Purification: Affinity Chromatography.

Applications: WB, ICC, IHC-P, IHC-F, ELISA

Concentration: 200µg/mL

UOM: 100µg

[IMMUNOGEN INFORMATION]

Immunogen: Recombinant CILP (Pro604~His864) expressed in *E.coli*.

Accession No.: RPC382Mu01

Sequence: The target protein is fused with two N-terminal Tags, His-tag and GST-tag and its sequence is listed below.

MSPILGYWKI KGLVQPTRL L LEYLEEKYEE HLYERDEGDK WRNKKFELGL EFPNLPYYID
GDVKLTQSMA IIRYIADKHN MLGGCPKERA EISMLEGAVL DIRYGVSR IA YSKDFETLKV
DFLSKLP EML KMFEDRLCHK TYLNGDHVTH PDFMLYDALD VVLYMDPMCL DAFP KLVCFK
KRIEAI PQID KYLKSSKYIA WPLQG WQATF GGGDHPPKSD GSTSGSGHHH HHSAGLVPR
GSTAIGMKET AAKAFERQHM DSPDLGTGGG SGIEGRGSMG YRGSEF-PSKSFYR
QNGEPFTGKV KASVTFLDPR NISTATAAQS DLNFINDEGD TFPLRTYGMF SVDFRDEATS
ESLNAGKVKV HLDSTQVKMP EHV PAMKLWS LNPDTGLWEE EGDFKFESQR RNKREERTFL
VGNMEIRERR LFNLDVPESR RCFIKVRTYR SERFLPSEQI QGVVSVINL EPRTGFSSNP
RAWGRFDSVI TGPNGACLPA FCDDQSPDAY SVYVLASLSG EELEAVESSP KFNPN AIGVP
QPYLNKLYR RTDH

[ANTIBODY SPECIFICITY]

The antibody is a rabbit polyclonal antibody raised against CILP. It has been selected for its ability to recognize CILP in immunohistochemical staining and western blotting.

[APPLICATIONS]

Western blotting: 1:100-400

Immunocytochemistry in formalin fixed cells: 1:100-500

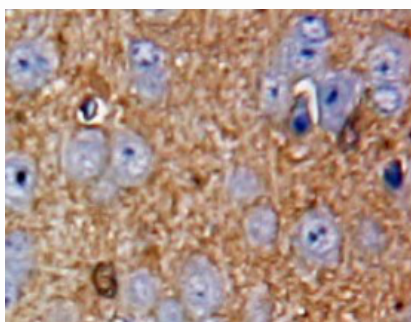
Immunohistochemistry in formalin fixed frozen section: 1:100-500

Immunohistochemistry in paraffin section: 1:50-200

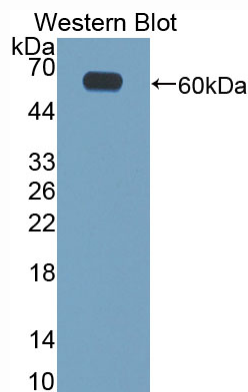
Enzyme-linked Immunosorbent Assay: 1:100-200

Optimal working dilutions must be determined by end user.

[IMAGES]



Used in DAB staining on formalin fixed
paraffin-embedded Brain tissue



Used in Western Blot, Sample:
Recombinant CILP, Mouse

[CONTENTS]

Form & Buffer: Supplied as solution form in PBS, pH7.4, containing 0.02% NaN_3 , 50% glycerol.

[QUALITY CONTROL]

Content: The quality control contains recombinant CILP (Pro604~His864) disposed in loading buffer.

Usage: 10uL per well when 3,3'-Diaminobenzidine(DAB) as the substrate.
5uL per well when used in enhanced chemiluminescent (ECL).

Note: The quality control is specifically manufactured as the positive control. Not used for other purposes.

Loading Buffer: 100mM Tris(pH8.8), 2% SDS, 200mM NaCl, 50% glycerol, BPB 0.01%, NaN_3 0.02%.

[STORAGE]

Store at 4°C for frequent use. Stored at -20°C to -80°C in a manual defrost freezer for one year without detectable loss of activity. Avoid repeated freeze-thaw cycles.