

PAB697Hu01

Polyclonal Antibody to Alpha-1-Antitrypsin (a1AT)

Organism Species: *Homo sapiens (Human)*

Instruction manual

FOR RESEARCH USE ONLY

NOT FOR USE IN CLINICAL DIAGNOSTIC PROCEDURES

13th Edition (Revised in Aug, 2023)

[**PROPERTIES**]

Source: Polyclonal antibody preparation

Host: Rabbit

Purification: Antigen-specific affinity chromatography followed by Protein A affinity chromatography

Traits: Liquid

Concentration: 0.5mg/mL

UOM: 1mL

Cross Reactivity: Porcine

Applications: WB; IHC; ICC; IP.

[**IMMUNOGEN**]

Immunogen: Recombinant a1AT (Glu25~Lys418) expressed in *E.coli*

Accession No.: RPB697Hu01

[**APPLICATIONS**]

Western blotting: 0.002-2µg/mL

Immunohistochemistry: 5-20µg/mL

Immunocytochemistry: 5-20µg/mL

Optimal working dilutions must be determined by end user.

[**FORMULATION**]

Form & Buffer: Supplied as solution form in 0.01M PBS, pH7.4, containing 0.05% Proclin-300, 50% glycerol.

[**STORAGE AND STABILITY**]

Storage: Avoid repeated freeze/thaw cycles.

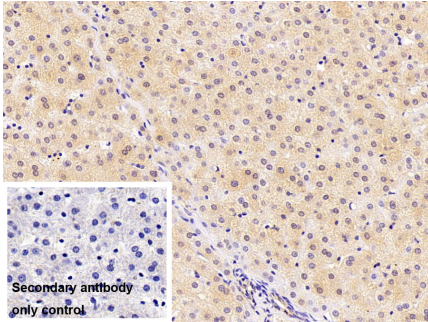
Store at 4°C for frequent use.

Aliquot and store at -20°C for 24 months.

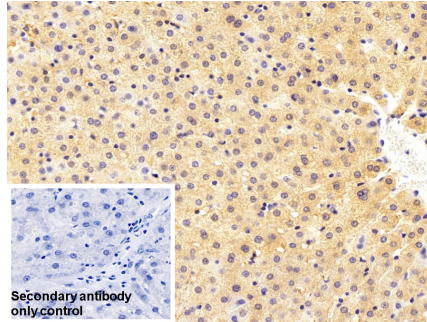
Stability Test: The thermal stability is described by the loss rate. The loss rate was determined by accelerated thermal degradation test, that is, incubate the protein at 37°C for 48h, and no

obvious degradation and precipitation were observed. The loss rate is less than 5% within the expiration date under appropriate storage condition.

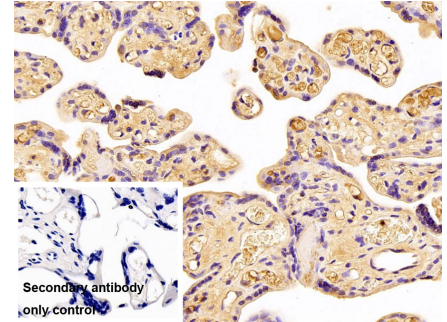
[IDENTIFICATION]



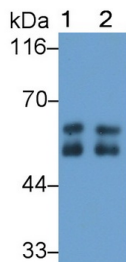
DAB staining on IHC-P; Sample: Porcine Liver Tissue
 Primary Ab: 10µg/ml Rabbit Anti-Human a1AT
 Antibody Control: Used PBS instead of primary antibody
 Second Ab: 2?g/ml HRP-Linked Caprine Anti-Rabbit IgG Polyclonal Antibody (Catalog: SAA544Rb19)



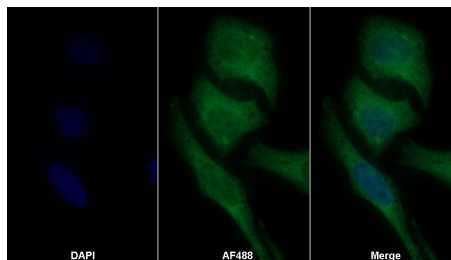
DAB staining on IHC-P; Sample: Human Liver Tissue
 Primary Ab: 10µg/ml Rabbit Anti-Human a1AT Antibody
 Control: Used PBS instead of primary antibody
 Second Ab: 2µg/ml HRP-Linked Caprine Anti-Rabbit IgG Polyclonal Antibody (Catalog: SAA544Rb19)



DAB staining on IHC-P; Sample: Human Placenta Tissue
 Primary Ab: 10µg/ml Rabbit Anti-Human a1AT Antibody
 Control: Used PBS instead of primary antibody
 Second Ab: 2?g/ml HRP-Linked Caprine Anti-Rabbit IgG Polyclonal Antibody (Catalog: SAA544Rb19)



Western Blot; Sample: Lane1: Human Serum; Lane2: Human Plasma
 Primary Ab: 0.002µg/ml Rabbit Anti-Human a1AT Antibody
 Second Ab: 0.2µg/mL HRP-Linked Caprine Anti-Rabbit IgG Polyclonal Antibody



AF488 staining on IF; Sample: HepG2 cell
 Primary Ab: 20µg/ml Rabbit Anti-Human a1AT Antibody
 Second Ab: 2?g/ml AF488-Linked Caprine Anti-Rabbit IgG Polyclonal Antibody (Catalog: SAA544Rb11)

(Catalog: SAA544Rb19)

[IMPORTANT NOTE]

The kit is designed for research use only, we will not be responsible for any issue if the kit was used in clinical diagnostic or any other procedures.