

**NPB409Ra01 100µg**

**Native Hemoglobin (HB)**

**Organism Species: Rattus norvegicus (Rat)**

***Instruction manual***

FOR IN VITRO USE AND RESEARCH USE ONLY

NOT FOR USE IN CLINICAL DIAGNOSTIC PROCEDURES

---

---

11th Edition (Revised in May, 2016)

## **[ PROPERTIES ]**

**Source:** Natural Extract

**Host:** Rat (Plasm)

**Tissue Specificity:** Plasm.

**Subcellular Location:** Secreted.

**Purity:** >95% as determined by SDS-PAGE.

**Purification Methods:** Salt co-precipitation and protein A affinity chromatography.

**Traits:** Freeze-dried powder

**Buffer Formulation:** 20mM Tris, 150mM NaCl, pH8.0, containing 1mM EDTA, 1mM DTT and 5%Trehalose.

**Original Concentration:** 200ug/mL

**Applications:** SDS-PAGE; WB; ELISA; IP; CoIP; EMSA; Reporter Assays; Purification; Activity Assays; Amine Reactive Labeling.

(May be suitable for use in other assays to be determined by the end user.)

**Accurate Molecular Mass:** 14kDa

**Observe Molecular Mass:** 14kDa

## **[ USAGE ]**

Reconstitute in 20mM Tris, 150mM NaCl (pH8.0) to a concentration of 0.1-1.0 mg/mL. Do not vortex.

## [ STORAGE AND STABILITY ]

**Storage:** Avoid repeated freeze/thaw cycles.

Store at 2-8°C for one month.

Aliquot and store at -80°C for 12 months.

**Stability Test:** The thermal stability is described by the loss rate. The loss rate was determined by accelerated thermal degradation test, that is, incubate the protein at 37°C for 48h, and no obvious degradation and precipitation were observed. The loss rate is less than 5% within the expiration date under appropriate storage condition.

## [ IDENTIFICATION ]

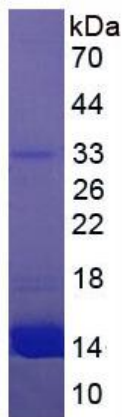


Figure 1. SDS-PAGE