

**MAB559Hu22**

**Monoclonal Antibody to Cofilin 1 (CFL1)**

**Organism Species: *Homo sapiens (Human)***

***Instruction manual***

FOR RESEARCH USE ONLY

NOT FOR USE IN CLINICAL DIAGNOSTIC PROCEDURES

---

13th Edition (Revised in Aug, 2023)

## **[ PROPERTIES ]**

**Source:** Monoclonal antibody preparation

**Host:** Mouse

**Antibody isotype:** IgG2a Kappa

**Purification:** Protein A + Protein G affinity chromatography

**Clone number:** C12

**Traits:** Liquid

**Concentration:** 1mg/ml

**UOM:** 100µl

**Cross Reactivity:** Porcine; Bovine.

**Applications:** WB; IHC; ICC/IF.

## **[ IMMUNOGEN ]**

**Immunogen:** Recombinant CFL1 (Ser3~Leu161) expressed in *E.coli*

**Accession No.:** RPB559Hu01

## **[ APPLICATIONS ]**

Western blotting: 0.01-2µg/mL;

Immunohistochemistry: 5-20µg/mL;

Immunocytochemistry: 5-30µg/mL;

Optimal working dilutions must be determined by end user.

## **[ FORMULATION ]**

**Form & Buffer:** Supplied as solution form in 0.01M PBS, pH7.4, containing 0.05% Proclin-300, 50% glycerol.

## **[ STORAGE AND STABILITY ]**

**Storage:** Avoid repeated freeze/thaw cycles.

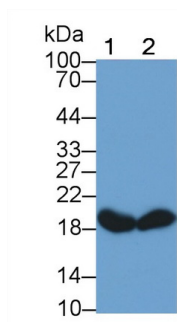
Store at 4°C for frequent use.

Aliquot and store at -20°C for 24 months.

**Stability Test:** The thermal stability is described by the loss rate. The loss rate was determined

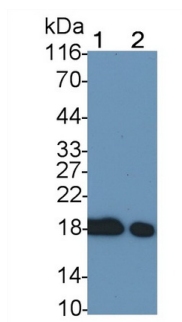
by accelerated thermal degradation test, that is, incubate the protein at 37°C for 48h, and no obvious degradation and precipitation were observed. The loss rate is less than 5% within the expiration date under appropriate storage condition.

## [ IDENTIFICATION ]



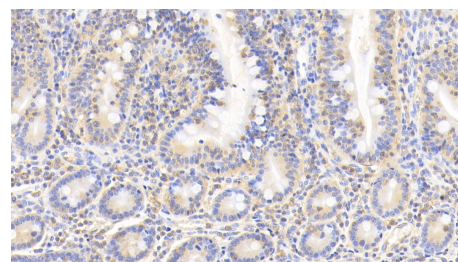
Western Blot; Sample: Lane1: Porcine Cerebrum lysate; Lane2: Porcine Liver lysate

Primary Ab: 2?g/ml Mouse Anti-Human CFL1 Antibody  
Second Ab: 0.2µg/mL HRP-Linked Caprine Anti-Mouse IgG Polyclonal Antibody  
(Catalog: SAA544Mu19)



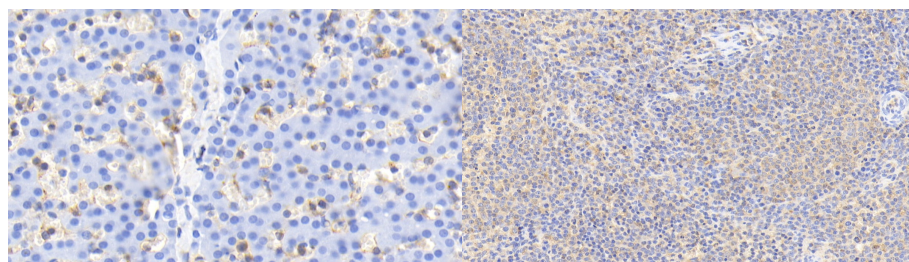
Western Blot; Sample: Lane1: Bovine Cerebrum lysate; Lane2: HepG2 cell lysate

Primary Ab: 0.2?g/ml Mouse Anti-Human CFL1 Antibody  
Second Ab: 0.2µg/mL HRP-Linked Caprine Anti-Mouse IgG Polyclonal Antibody  
(Catalog: SAA544Mu19)



DAB staining on IHC-P;

Sample: Human Small intestine Tissue;  
Primary Ab: 20µg/ml Mouse Anti-Human CFL1 Antibody  
Second Ab: 2µg/mL HRP-Linked Caprine Anti-Mouse IgG Polyclonal Antibody  
(Catalog: SAA544Mu19)

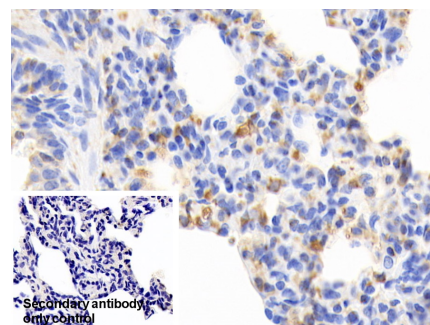


DAB staining on IHC-P;

Sample: Human Liver Tissue;  
Primary Ab: 20µg/ml Mouse Anti-Human CFL1 Antibody  
Second Ab: 2µg/mL HRP-Linked Caprine Anti-Mouse IgG Polyclonal Antibody  
(Catalog: SAA544Mu19)

DAB staining on IHC-P;

Sample: Human Spleen Tissue;  
Primary Ab: 20µg/ml Mouse Anti-Human CFL1 Antibody  
Second Ab: 2µg/mL HRP-Linked Caprine Anti-Mouse IgG Polyclonal Antibody  
(Catalog: SAA544Mu19)



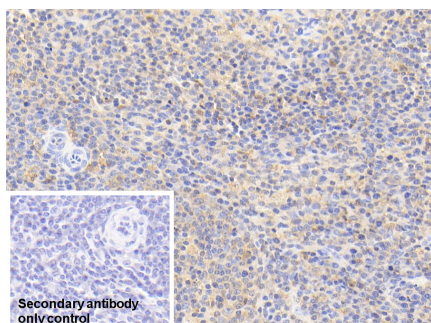
DAB staining on IHC-P;

Sample: Human Lung Tissue  
Primary Ab: 20µg/ml Mouse Anti-Human CFL1 Antibody  
Control: Used PBS instead of primary antibody  
Second Ab: 2µg/ml HRP-Linked

Caprine Anti-Mouse IgG Polyclonal

Antibody

(Catalog: SAA544Mu19)



DAB staining on IHC-P;

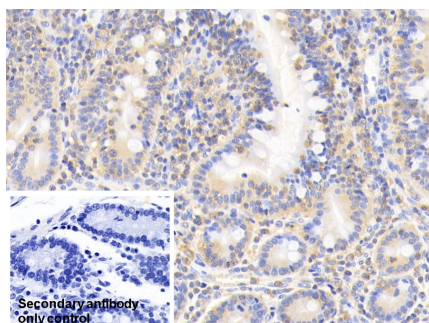
Sample: Human Spleen Tissue

Primary Ab: 20µg/ml Mouse Anti-Human CFL1 Antibody

Control: Used PBS instead of primary antibody

Second Ab: 2µg/ml HRP-Linked Caprine Anti-Mouse IgG Polyclonal Antibody

(Catalog: SAA544Mu19)



DAB staining on IHC-P;

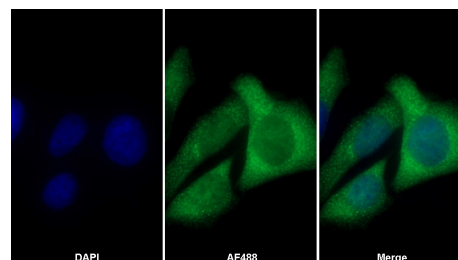
Sample: Human Small intestine Tissue

Primary Ab: 20µg/ml Mouse Anti-Human CFL1 Antibody

Control: Used PBS instead of primary antibody

Second Ab: 2µg/ml HRP-Linked Caprine Anti-Mouse IgG Polyclonal Antibody

(Catalog: SAA544Mu19)



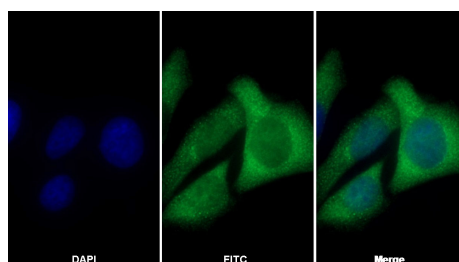
AF488 staining on IF;

Sample: Human Hela cell;

Primary Ab: 30µg/ml Mouse Anti-Human CFL1 Antibody

Second Ab: 2µg/ml AF488-Linked Caprine Anti-Mouse IgG Polyclonal Antibody

(Catalog: SAA544Mu11)



FITC staining on IF;

Sample: Hela cell

Primary Ab: 30µg/ml Mouse Anti-Human CFL1 Antibody

Second Ab: 2µg/ml FITC-Linked Caprine Anti-Mouse IgG Polyclonal Antibody

(Catalog: SAA544Mu11)

**[ IMPORTANT NOTE ]**

The kit is designed for research use only, we will not be responsible for any issue if the kit was used in clinical diagnostic or any other procedures.