

RPA780Po01 50µg
Recombinant Lactoferrin (LTF)
Organism Species: *Sus scrofa*; Porcine (Pig)
Instruction manual

FOR IN VITRO USE AND RESEARCH USE ONLY
NOT FOR USE IN CLINICAL DIAGNOSTIC PROCEDURES

9th Edition (Revised in Jul, 2013)

[PROPERTIES]

Residues: Val25~Glu348 (Accession # P14632),
with two N-terminal Tags, His-tag and GST-tag.

Host: *E. coli*

Subcellular Location: Secreted.

Purity: >95%

Endotoxin Level: <1.0EU per 1µg
(determined by the LAL method).

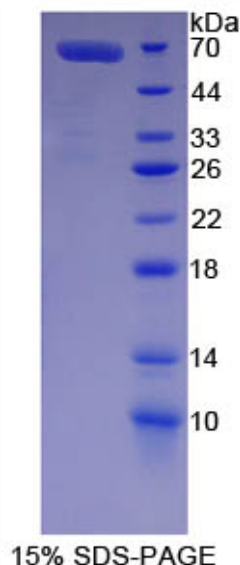
Formulation: Supplied as lyophilized form in 20mM Tris,
500mM NaCl, pH8.0, containing 1mM EDTA, 1mM DTT,
0.01% sarcosyl, 5% trehalose, and preservative.

Predicted isoelectric point: 8.7

Predicted Molecular Mass: 68.0kDa

Applications: SDS-PAGE; WB; ELISA; IP.

(May be suitable for use in other assays to be determined by the end user.)



[USAGE]

Reconstitute in sterile PBS, pH7.2-pH7.4.

[STORAGE AND STABILITY]

Storage: Avoid repeated freeze/thaw cycles.

Store at 2-8°C for one month.

Aliquot and store at -80°C for 12 months.

Stability Test: The thermal stability is described by the loss rate of the target protein. The loss rate was determined by accelerated thermal degradation test, that is, incubate the protein at 37°C for 48h, and no obvious degradation and precipitation were observed. (Referring from China Biological Products Standard, which was calculated by the Arrhenius equation.) The loss of this protein is less than 5% within the expiration date under appropriate storage condition.

[SEQUENCES]

The target protein is fused with two N-terminal Tags, His-tag and GST-tag, its sequence is listed below.

MSPILGYWKI KGLVQPTRL L LEYLEEKYEE HLYERDEGDK WRNKKFELGL EFPNLPYYID
GDVKLTQSMA IIRYIADKHN MLGGCPKERA EISMLEGAVL DIRYGVSR IA YSKDFETLKV
DFLSKLP EML KMFEDRLCHK TYLNGDHVTH PDFMLYDALD VVLYMDPMCL DAFPKLVCFK
KRIEAIQID KYLKSSKYIA WPLQG WQATF GGGDHPPKSD GSTSGSGHHH HHSAGLVPR
GSTAIGMKET AAKFERQHM DSPDLGTLEV L FQGPLGS-VRWCVI STAEYSKCRQ
WQSKIRRTNP MFCIRRASPT DCIRAIAAKR ADAVTLDGGL VFEADQYKLR PVA AEIYGTE
ENPQTYYYAV AVVKKGFNFQ LNQLQGRKSC HTGLGRSAGW NIPIGLLRRF LDWAGPPEPL
QKAVAKFFSQ SCVPCADGNA YPNLCQLCIG KGKDKCACSS QEPYFGYSGA FNCLHKIGID
VAFVKESTVF ENLPQKARDR KYELLCPDNT RKPVEAFREC HLARVPSHAV VARSVNGKEN
SIWELLYQSQ KKFGKSNPQE FQLFGSPGQQ KDLLFRDATI GFLKIPSKID SKLYLGLPYL
TAIQLRE

[REFERENCES]

1. Alexander L.J., *et al.* (1992) *Anim. Genet.* 23:251-256.
2. Lyndon J.P., *et al.* (1992) *Biochim. Biophys. Acta* 1132:97-99.
3. Hutchens T.W., *et al.* (1989) *Biochim. Biophys. Acta* 999:323-329.