

RPA780Mu01 10µg

Recombinant Lactoferrin (LTF)

Organism Species: *Mus musculus* (Mouse)

Instruction manual

FOR IN VITRO USE AND RESEARCH USE ONLY

NOT FOR USE IN CLINICAL DIAGNOSTIC PROCEDURES

10th Edition (Revised in Jan, 2014)

[PROPERTIES]

Residues: Cys63~Gly193

Tags: Two N-terminal Tags, His-tag and GST-tag

Accession: P08071

Host: *E. coli*

Subcellular Location: Secreted.

Purity: >95%

Endotoxin Level: <1.0EU per 1µg

(determined by the LAL method).

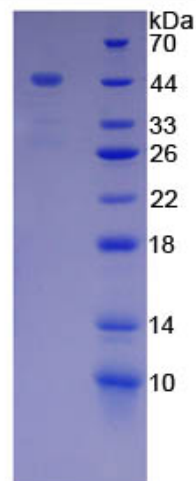
Formulation: Supplied as lyophilized form in PBS, pH7.4, containing 1mM DTT, 5% trehalose, 0.01% sarcosyl and preservative.

Predicted isoelectric point: 7.6

Predicted Molecular Mass: 46.2kDa

Applications: SDS-PAGE; WB; ELISA; IP.

(May be suitable for use in other assays to be determined by the end user.)



15% SDS-PAGE

[USAGE]

Reconstitute in sterile PBS, pH7.2-pH7.4.

[STORAGE AND STABILITY]

Storage: Avoid repeated freeze/thaw cycles.

Store at 2-8°C for one month.

Aliquot and store at -80°C for 12 months.

Stability Test: The thermal stability is described by the loss rate of the target protein. The loss rate was determined by accelerated thermal degradation test, that is, incubate the protein at 37°C for 48h, and no obvious degradation and precipitation were observed. (Referring from China Biological Products Standard, which was calculated by the Arrhenius equation.) The loss of this protein is less than 5% within the expiration date under appropriate storage condition.

[SEQUENCES]

The sequence of the target protein is listed below.

CIQAVTN RADAMTLDGG TMDAGKPPY KLRPVAAEVY GTKEQPRTHY YAVAVKNS
NFHLNQLQGL RSCHTGIGRS AGWKIPIGTL RPYLNWNGPP ASLEEAVSKF
FSKSCVPGAQKDRFPNLCS CAG

[REFERENCES]

1. Pentecost B.T., Teng C.T. (1987) J. Biol. Chem. 262:10134-10139.
2. Ward P.P., *et al.* (1999) Endocrinology 140:1852-1860.
3. Baehner R.L., *et al.* (1999) Pediatr. Res. 46:152-157.
4. Bois P.R., *et al.* (2001) Mamm. Genome 12:104-111.