

**RPA716Hu01 10µg**

**Recombinant Glucose 6 Phosphate Dehydrogenase (G6PD)**

**Organism Species: Homo sapiens (Human)**

***Instruction manual***

FOR IN VITRO USE AND RESEARCH USE ONLY

NOT FOR USE IN CLINICAL DIAGNOSTIC PROCEDURES

10th Edition (Revised in Jan, 2014)

## **[ PROPERTIES ]**

**Residues:** Met1~Leu515

**Tags:** N-terminal His-Tag

**Accession:** P11413

**Host:** *E. coli*

**Purity:** >95%

**Endotoxin Level:** <1.0EU per 1µg

(determined by the LAL method).

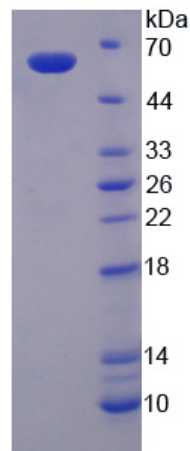
**Formulation:** Supplied as lyophilized form in 20mM Tris, 150mM NaCl, pH8.0, containing 1mM EDTA, 1mM DTT, 0.01% sarcosyl, 5% trehalose, and preservative.

**Predicted isoelectric point:** 6.4

**Predicted Molecular Mass:** 60.5kDa

**Applications:** SDS-PAGE; WB; ELISA; IP.

(May be suitable for use in other assays to be determined by the end user.)



15% SDS-PAGE

## **[ USAGE ]**

Reconstitute in ddH<sub>2</sub>O.

## [ STORAGE AND STABILITY ]

### **Storage: Avoid repeated freeze/thaw cycles.**

Store at 2-8°C for one month.

Aliquot and store at -80°C for 12 months.

**Stability Test:** The thermal stability is described by the loss rate of the target protein. The loss rate was determined by accelerated thermal degradation test, that is, incubate the protein at 37°C for 48h, and no obvious degradation and precipitation were observed. (Referring from China Biological Products Standard, which was calculated by the Arrhenius equation.) The loss of this protein is less than 5% within the expiration date under appropriate storage condition.

## [ SEQUENCES ]

The sequence of the target protein is listed below.

MAEQVALSRT QVCGILREEL FQGDAFHQSD THIFIIMGAS GDLAKKKIYP TIWWLFRDGL  
LPENTFIVGY ARSRLTVADI RKQSEPFKA TPEEKLKLED FFARNSYVAG QYDDAASYQR  
LNSHMNALHL GSQANRLFYL ALPPTVYEAV TKNIHESCMS QIGWNRIIVE KPFGRDLQSS  
DRLSNHISSL FREDQIYRID HYLKEMVQN LMVLRANRI FGPIWNRDNI ACVILTFKEP  
FGTEGRGGYF DEFGIIRDVM QNHLLQMLCL VAMEKPASTN SDDVRDEKVK VLKCISEVQA  
NNVVLGQYVG NPDGEGEATK GYLDDPTVPR GSTTATFAAV VLYVENERWD GVPFILRCGK  
ALNERKAEVR LQFHDVAGDI FHQQCKRNEL VIRVQPNEAV YTKMMTKKPG MFFNPEESEL  
DLTYGNRYKN VKLPDAYERL ILDVFCGSQM HFVRSDELRE AWRIFTPLLH QIELEKPKPI  
PYIYGSRGPT EADELMKRVG FQYEGTYKWV NPHKL

## [ REFERENCES ]

1. Chen E.Y., *et al.* (1996) Hum. Mol. Genet. 5:659-668.
2. Chen E.Y., *et al.* (1991) Genomics 10:792-800.
3. Hirono A., Beutler E. (1988) Proc. Natl. Acad. Sci. U.S.A. 85:3951-3954.
4. Martini G., *et al.* (1986) EMBO J. 5:1849-1855.