

RPA183Hu02 50µg
Recombinant Galactosidase Alpha (GLa)
Organism Species: Homo sapiens (Human)
Instruction manual

FOR IN VITRO USE AND RESEARCH USE ONLY
NOT FOR USE IN CLINICAL DIAGNOSTIC PROCEDURES

10th Edition (Revised in Jan, 2014)

[PROPERTIES]

Residues: Gly147~Ser371

Tags: Two N-terminal Tags, His-tag and S-tag

Accession: P06280

Host: *E. coli*

Subcellular Location: Lysosome.

Purity: >95%

Endotoxin Level: <1.0EU per 1µg
(determined by the LAL method).

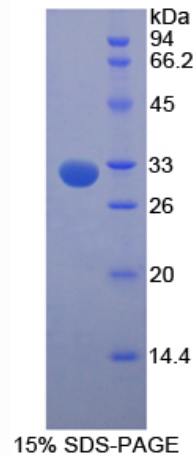
Formulation: Supplied as lyophilized form in PBS,
pH7.4, containing 1mM DTT, 5% trehalose, 0.01%
sarcosyl and preservative.

Predicted isoelectric point: 5.1

Predicted Molecular Mass: 31.4kDa

Applications: SDS-PAGE; WB; ELISA; IP.

(May be suitable for use in other assays to be determined by the end user.)



[USAGE]

Reconstitute in sterile PBS, pH7.2-pH7.4.

[STORAGE AND STABILITY]

Storage: Avoid repeated freeze/thaw cycles.

Store at 2-8°C for one month.

Aliquot and store at -80°C for 12 months.

Stability Test: The thermal stability is described by the loss rate of the target protein. The loss rate was determined by accelerated thermal degradation test, that is, incubate the protein at 37°C for 48h, and no obvious degradation and precipitation were observed. (Referring from China Biological Products Standard, which was calculated by the Arrhenius equation.) The loss of this protein is less than 5% within the expiration date under appropriate storage condition.

[SEQUENCES]

The sequence of the target protein is listed below.

GSFG YYDIDAQTFA DWGVDLLKFD GCYCDSLENL ADGYKHMSLA LNRTGRSIVY
SCEWPLYMWP FQKPNYTEIR QYCNHWRNFA DIDDSWKSIK SILDWTSFNQ ERIVDVAGPG
GWNDPDM LVI GNFGLSWNQQ VTQMALWAIM AAPLFMSNDL RHISPQAKAL LQDKDVIAIN
QDPLGKQGYQ LRQGDNFEVW ERPLSGLAWA VAMINRQEIG GPRSYTIAVA S

[REFERENCES]

1. Bishop D.F., *et al.* (1988) Proc. Natl. Acad. Sci. U.S.A. 85:3903-3907.
2. Quinn M., *et al.* (1987) Gene 58:177-188.
3. Bishop D.F., *et al.* (1986) Proc. Natl. Acad. Sci. U.S.A. 83:4859-4863.
4. Oeltjen J.C., *et al.* (1995) Mamm. Genome 6:334-338.