

EPA539Hu61 100ug

Eukaryotic Myelin Basic Protein (MBP)

Organism Species: Homo sapiens (Human)

Instruction manual

FOR IN VITRO USE AND RESEARCH USE ONLY

NOT FOR USE IN CLINICAL DIAGNOSTIC PROCEDURES

11th Edition (Revised in May, 2016)

[PROPERTIES]

Source: Eukaryotic expression.

Host: 293F cell

Residues: Met1~Arg304

Tags: N-terminal His Tag

Homology: Mouse 70%, rat 48%

Tissue Specificity: Spleen.

Subcellular Location: Cell membrane. Membrane. Nucleus.

Purity: >95%

Endotoxin Level: <1.0EU per 1µg (determined by the LAL method).

Traits: Freeze-dried powder

Buffer Formulation: 20mM Tris, 150mM NaCl, pH8.0, containing 1mM EDTA, 1mM DTT, 5%Trehalose and Proclin300.

Original Concentration: 200ug/mL

Predicted isoelectric point: 9.8

Predicted Molecular Mass: 34.7kDa

Accurate Molecular Mass: 46kDa as determined by SDS-PAGE reducing conditions.

Applications: SDS-PAGE; WB; ELISA; IP; CoIP; EMSA; Reporter Assays; Purification; Amine Reactive Labeling.

(May be suitable for use in other assays to be determined by the end user.)

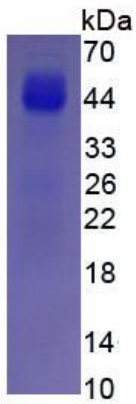


Figure 2. SDS-PAGE