

**PAB250Mu01****Polyclonal Antibody to 5'-Nucleotidase, Ecto (NT5E)****Organism Species: *Mus musculus* (Mouse)*****Instruction manual***

FOR IN VITRO USE AND RESEARCH USE ONLY

NOT FOR USE IN CLINICAL DIAGNOSTIC PROCEDURES

9th Edition (Revised in Jul, 2013)

**[ PRODUCT INFORMATION ]****Immunogen:** NT5E, Mouse**Clonality:** Polyclonal**Host:** Rabbit**Immunoglobulin Type:** IgG**Purification:** Affinity Chromatography.**Applications:** WB, ICC, IHC-P, IHC-F, ELISA**Concentration:** 200µg/mL**UOM:** 100µg**[ IMMUNOGEN INFORMATION ]****Immunogen:** Recombinant NT5E (Trp29~phe550) expressed in *E.coli*.**USCN Accession No.:** RPB250Mu01**Sequence:** The target protein is fused with N-terminal His-Tag and its sequence is listed below.

MGHHHHHHSQSEF-WE LTILHTNDVH SRLEQTSDDS TKCLNASLCV GGVARLFTKV  
QQIRKEEPNV LFLDAGDQYQ GTIWFTVYKG LEVAHF MNIL GYDAMALGNH EFDNGVEGLI  
DPLLNRNVKFP ILSANIKARG PLAHQISGLF LPSKVLSVGG EVVGIVGYTS KETPFLSNPG  
TNLVFEDEIS ALQPEVDKLG TLNVNKKIAL GHSGFEMDKL IAQKVRGVDI VVGGHSNTFL  
YTGPPSKEV PAGKYPFIVT ADDGRQVPV VQAYAFGKYLK YLKVFEFDDKG NVITSYGNPI  
LLNSSIPEDA TIKADINQWR IKLDNYSTQE LGRTIVYLDG STQTCRFREC NMGNLICDAM  
INNNLRHPDE MFWNHVSMCI VNGGGIRSPI DEKNNGTITW ENLAAVLPFG GTFDLVQLKG  
STLKKAFEHS VHRYGQSTGE FLQVGGIHVV YDINRKPWNR VVQLEVLCTK CRVPIYEPLE  
MDKVYKVTLP SYLANGGDGF QMIKDELLKH DSGDQDISVV SEYISKMKVV YPAVEGRIKF

**[ ANTIBODY SPECIFICITY ]**

The antibody is a rabbit polyclonal antibody raised against NT5E. It has been selected for its ability to recognize NT5E in immunohistochemical staining and western blotting.

**[ APPLICATIONS ]**

Western blotting: 1:100-400

Immunocytochemistry in formalin fixed cells: 1:100-500

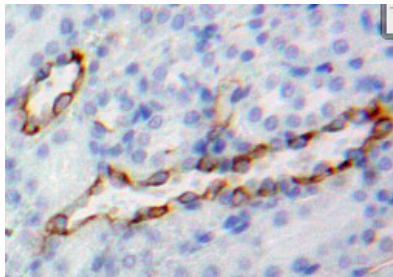
Immunohistochemistry in formalin fixed frozen section: 1:100-500

Immunohistochemistry in paraffin section: 1:50-200

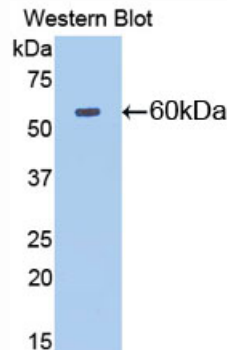
Enzyme-linked Immunosorbent Assay: 1:100-200

Optimal working dilutions must be determined by end user.

## [ IMAGES ]



Used in DAB staining on formalin fixed  
paraffin- embedded Kidney tissue



Used in Western Blot ,Sample:  
Recombinant NT5E, Mouse

## [ CONTENTS ]

**Form & Buffer:** Supplied as solution form in PBS, pH7.4, containing 0.02% NaN<sub>3</sub>, 50% glycerol.

## [ QUALITY CONTROL ]

**Content:** The quality control contains recombinant NT5E (Trp29~phe550) disposed in loading buffer.

**Usage:** 10uL per well when 3,3'-Diaminobenzidine(DAB) as the substrate.  
5uL per well when used in enhanced chemiluminescent (ECL).

**Note:** The quality control is specifically manufactured as the positive control. Not used for other purposes.

**Loading Buffer:** 100mM Tris(pH8.8), 2% SDS, 200mM NaCl, 50% glycerol, BPB 0.01%, NaN<sub>3</sub> 0.02%.

## [ STORAGE ]

Store at 4°C for frequent use. Stored at -20°C to -80°C in a manual defrost freezer for one year without detectable loss of activity. Avoid repeated freeze-thaw cycles.