

AAC231Mu02
Anti-Phosphorylated Protein Kinase B Alpha (PKBa) Monoclonal Antibody
Organism Species: Mus musculus (Mouse)
Instruction manual

FOR IN VITRO USE AND RESEARCH USE ONLY
NOT FOR USE IN CLINICAL DIAGNOSTIC PROCEDURES

12th Edition (Revised in Aug, 2016)

[PROPERTIES]

Source: Monoclonal antibody preparation

Host: Mouse

Antibody isotype: IgG

Specificity: Phospho-PKBa (Ser473) antibody detects endogenous levels of PKBa only when phosphorylated at serine 473.

Purification: Protein A/G Affinity Chromatography.

Clone number: D4

Traits: Liquid

Concentration: 500µg/mL

UOM: 200µg

Applications: ICC; IHC-P; IHC-F; ELISA; IP; IF; FCM.

[IMMUNOGEN]

Immunogen: Synthetic Phosphopeptide Phospho-PKBa(Ser473)

Accession No.: MPC231Mu01

Sequence: The target peptide sequence is listed below.

MEC VDSERRPHFP QFS_PY

[APPLICATIONS]

Immunocytochemistry in formalin fixed cells: 5-30ug/ml

Immunohistochemistry in formalin fixed frozen section: 5-30ug/ml

Immunohistochemistry in paraffin section: 5-30ug/ml

Enzyme-linked Immunosorbent Assay: 0.05-2ug/ml

Optimal working dilutions must be determined by end user.

[FORMULATION]

Form & Buffer: Supplied as solution form in 0.01M PBS, pH7.4, containing 0.05% Proclin-300, 50% glycerol.

[STORAGE AND STABILITY]

Storage: Avoid repeated freeze/thaw cycles.

Store at 4°C for frequent use.

Aliquot and store at -20°C for 12 months.

Stability Test: The thermal stability is described by the loss rate. The loss rate was determined by accelerated thermal degradation test, that is, incubate the protein at 37°C for 48h, and no obvious degradation and precipitation were observed. The loss rate is less than 5% within the expiration date under appropriate storage condition.

[IDENTIFICATION]

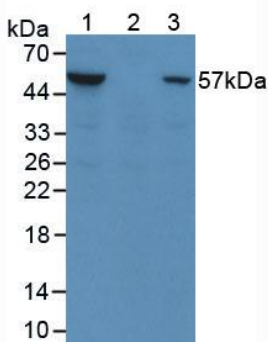


Figure 1. Western Blot

Sample:

Lane1: Human MCF-7 Cells

Lane2: Human MCF-7 Cells treated with Alkaline Phosphatase

Lane3: Human MCF-7 Cells

Primary Ab:

Lane1: 2µg/mL Mouse Anti-Mouse PKBa Ab

Lane2: 2µg/mL Mouse Anti-Mouse Phospho-PKBa (Ser473) Ab

Lane3: 2µg/mL Mouse Anti-Mouse Phospho-PKBa (Ser473) Ab

Second Ab: 1:5000 Dilution of HRP-Linked Rabbit Anti-Mouse IgG

Ab (Catalog: SAA544Mu09)